

Table of Contents

S-01 Bedding Detail

S-02 Gravity Main Crossing

S-03 Grease Trap Detail

S-04 Manhole, Cover & Frame

S-05 Manhole, Drop.JBC

S-06 Manhole, Flat Top.JBC

S-07 Manhole, Force Main Control

S-08 Manhole, Standard

S-09 Sewer Service Single

S-10 Pump Station Site Plan

S-11 Pump Station Section I

S-12 Pump Station Section II

S-13 Pump Station Wet Well

S-14 Pump Station Fencing Detail

S-15 Pump Station Electrical Layout

S-16 Pump Station Control Panel and Main Disconnect

S-17 Pump Station Hatch Detail

S-18-A Pump Station Simplex Grinder

S-18-B Pump Station Simplex Grinder

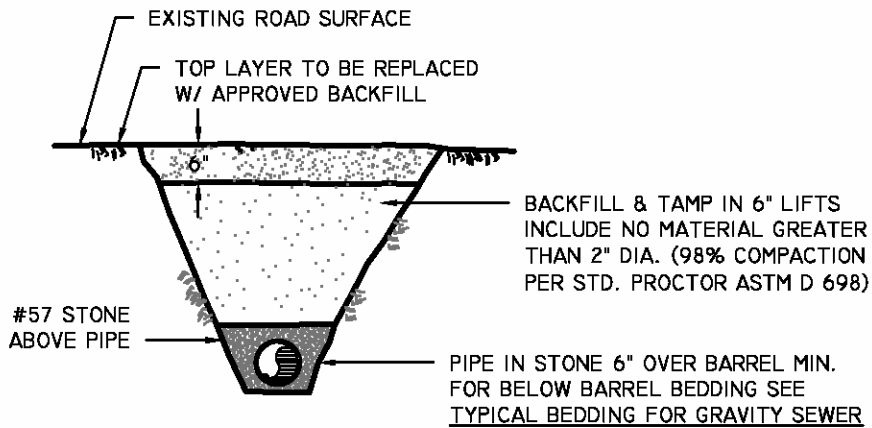
S-18-C Typical outdoor Installation

S-18-D Semi-Positive Displacement Type Grinder PS

S-19 Sewer Check Valve

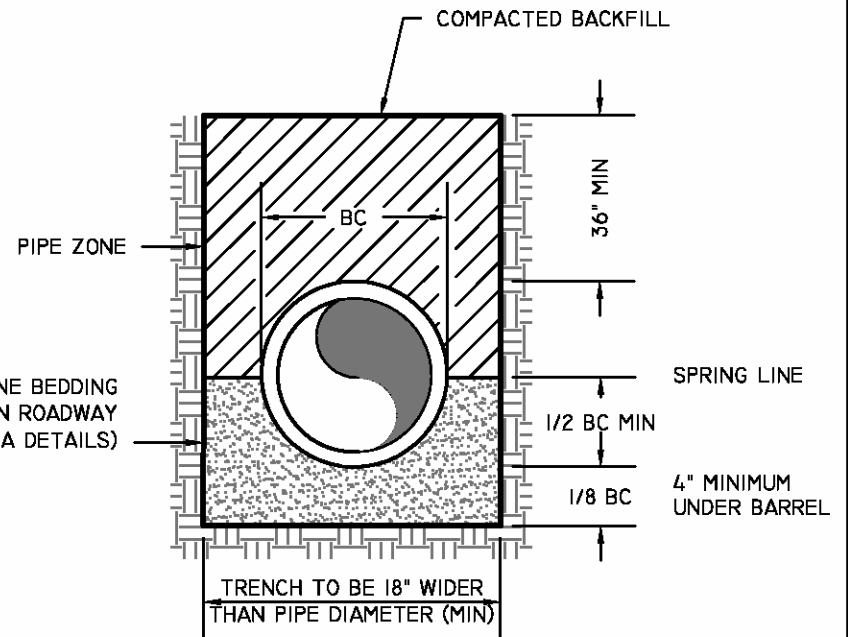
S-20 Sewer Air Release Pedestal Assembly

S-21 Pump Station 6X6 Grate Detail



UNPAVED ROADWAY BEDDING DETAIL

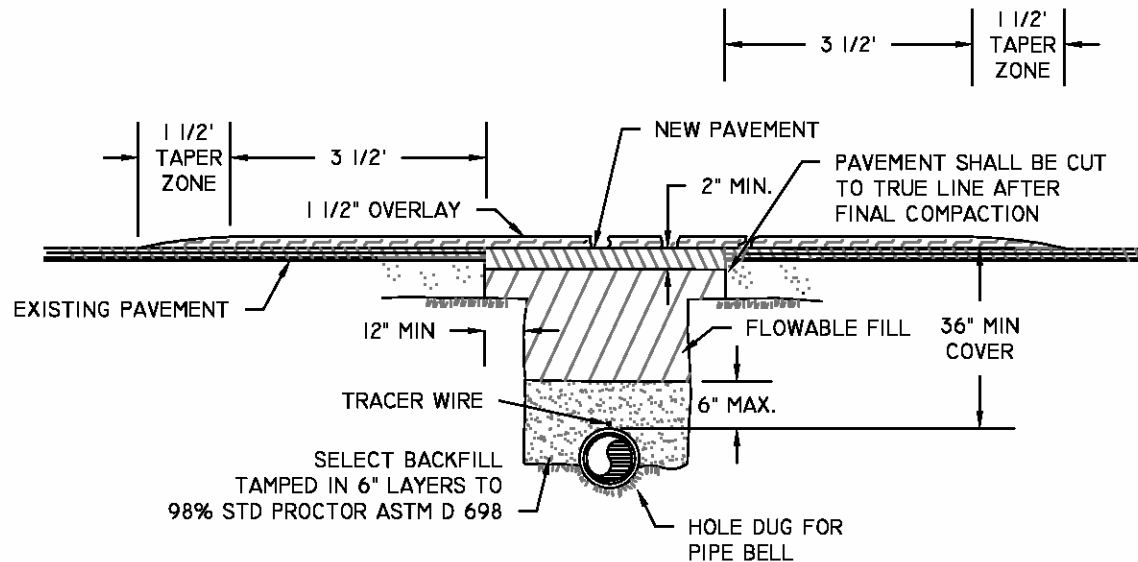
#57 STONE BEDDING (STONE ABOVE PIPE IN ROADWAY AND PAVED AREA DETAILS)



TYPICAL BEDDING FOR GRAVITY SEWER PIPE

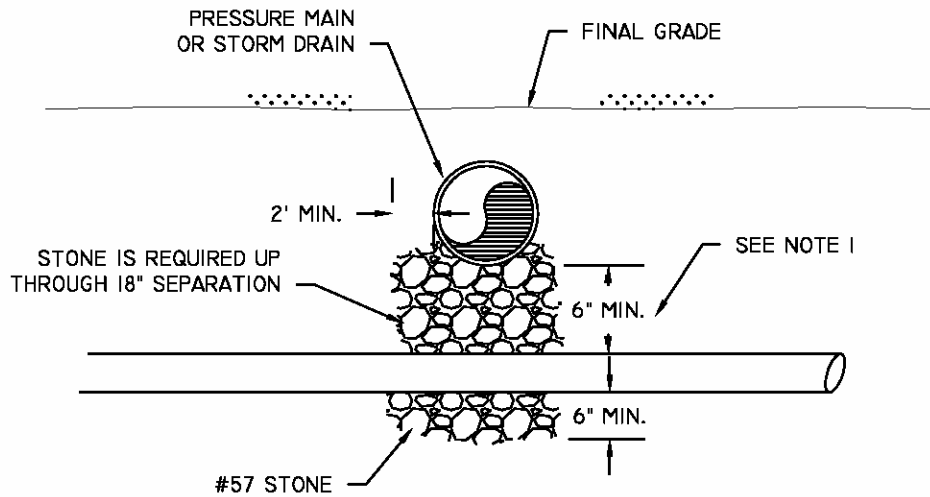
NOTES:

1. PAVEMENT CUT TO EXTEND 12" BEYOND EDGES OF TRENCH INSTALLATION CUT. FINAL CUT TO BE MADE AFTER FINAL COMPACTION.
2. MATCH EXISTING PAVEMENT TYP. THICKNESS IS TO BE 2" UNLESS EXISTING IS THICKER.
3. ALL INSTALLATIONS IN PUBLIC ROADWAYS SHALL COMPLY WITH CONDITIONS OUTLINED ON APPLICABLE ENCROACHMENT PERMIT, IF MORE STRINGENT.



PAVED AREA DETAIL

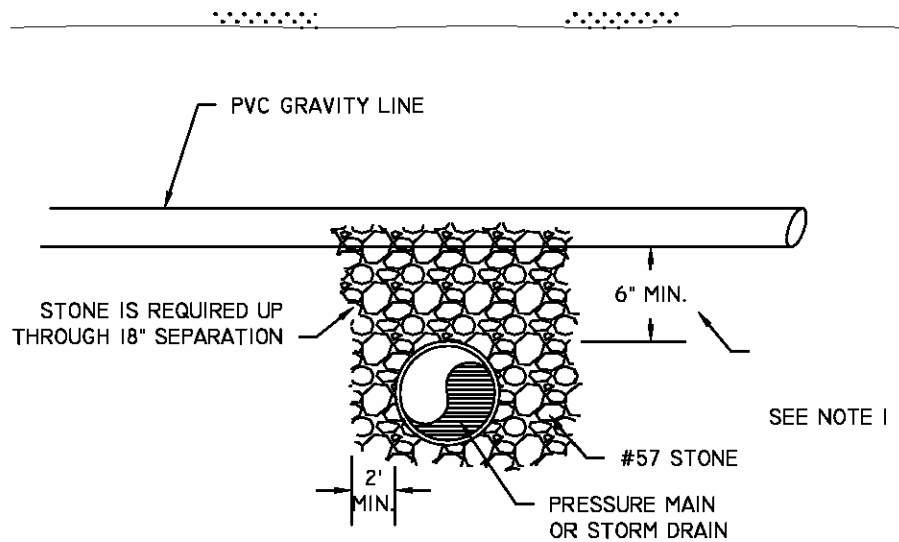
BROAD CREEK PUBLIC SERVICE DISTRICT			
BEDDING DETAIL, GRAVITY PIPE			
DATE	06/01/15	DRAWN BY	LEK
SCALE	N.T.S.	APPROVED BY	JLO
			DRAWING # S-01



**GRAVITY MAIN CROSSING UNDER
STORM DRAIN / PRESSURE MAIN**

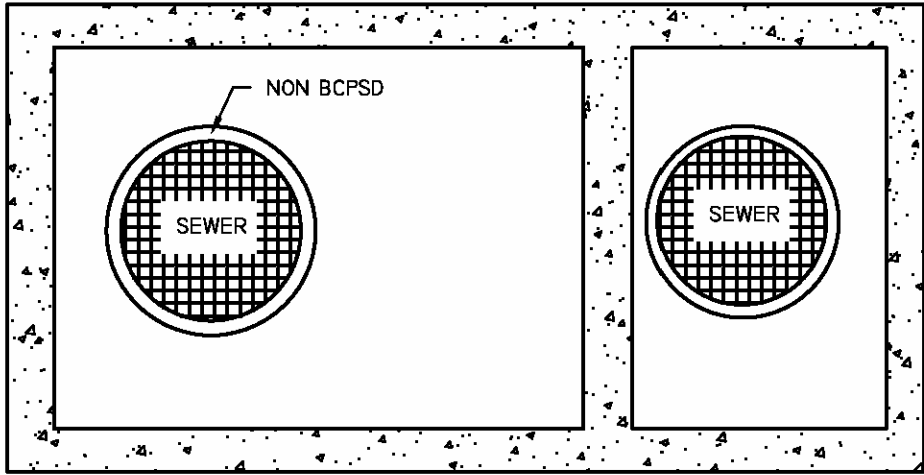
NOTE:

- I. SYSTEMS SHOULD NOT BE DESIGNED WITH LESS THAN 12" SEPARATION. IF LESS SEPARATION IS UNAVOIDABLE, WRITTEN AUTHORIZATION FROM BCPSD IS REQUIRED.



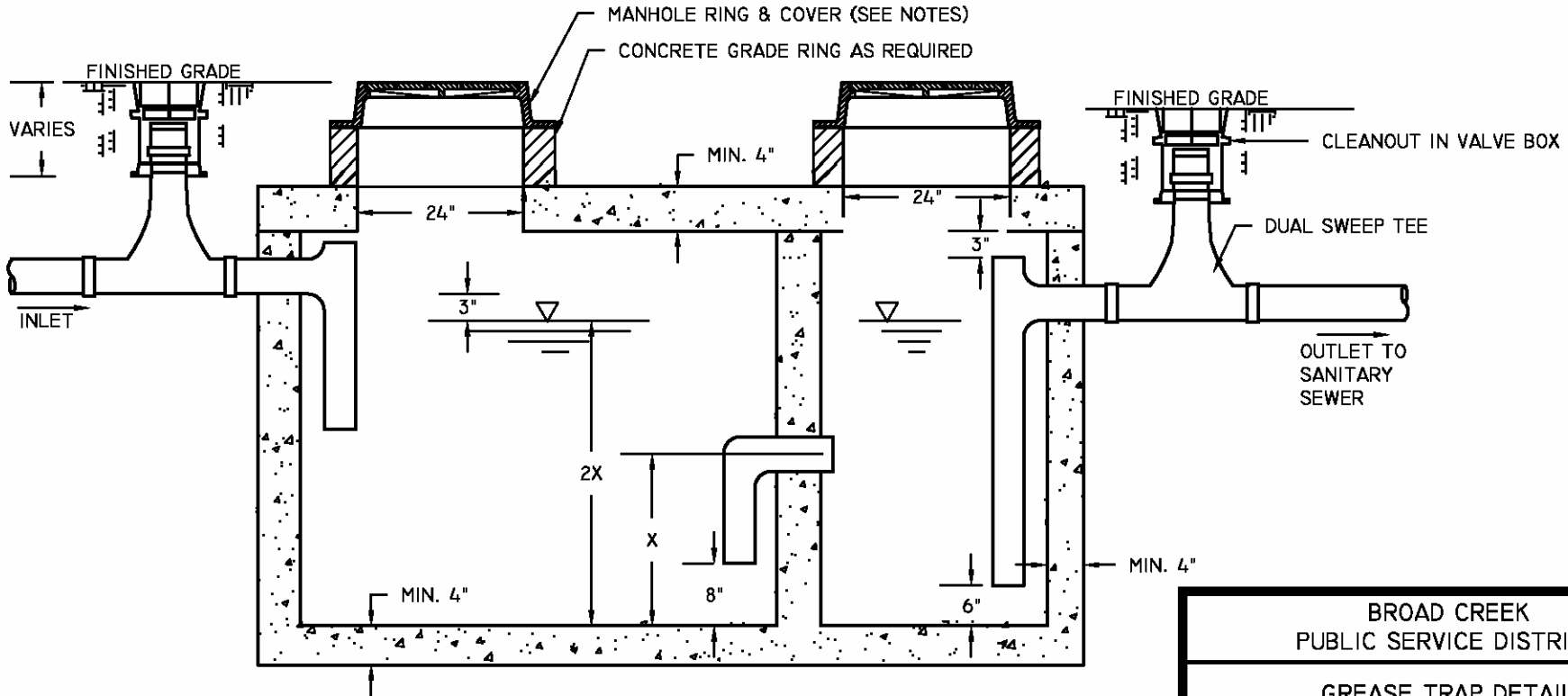
**GRAVITY MAIN CROSSING OVER
STORM DRAIN / PRESSURE MAIN**

BROAD CREEK PUBLIC SERVICE DISTRICT		
GRAVITY MAIN CROSSING		
DATE 06/01/15	DRAWN BY LEK	DRAWING # S-02
SCALE N.T.S.	APPROVED BY JLO	

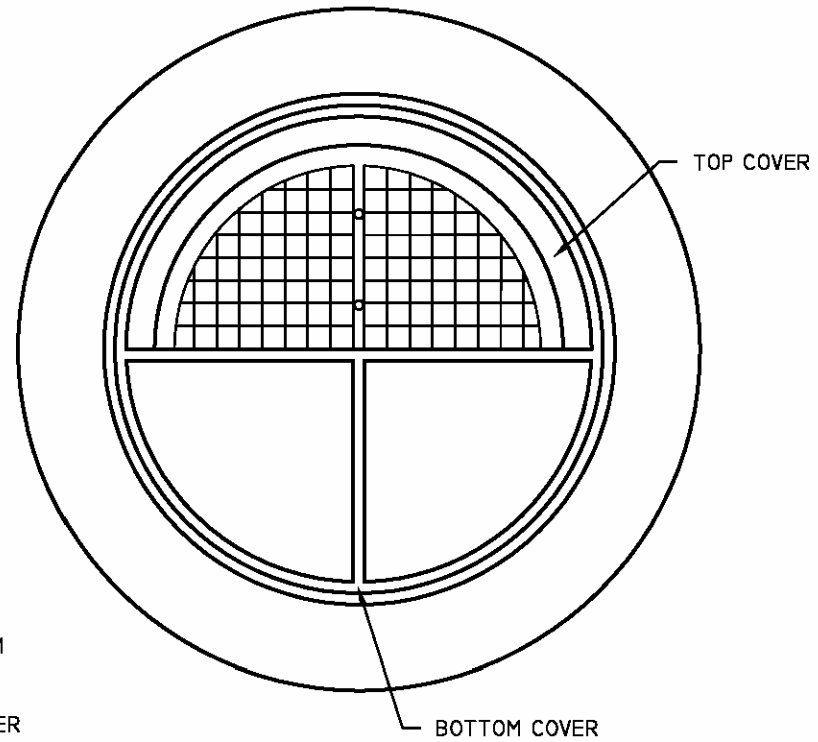


NOTES:

1. MANHOLE RING & COVER SHALL BE GAS AND WATER TIGHT PROVIDING A 22" MINIMUM CLEAR OPENING. REFER TO MANHOLE COVER AND FRAME DETAIL.
2. VOLUME OF GREASE TRAP SHALL BE BASED UPON ULTIMATE LOADING. SIZING CALCULATIONS MUST BE APPROVED BY BCPSD. MINIMUM SIZE SHALL BE 1,000 GALLONS. REFER TO SPECIFICATIONS FOR SIZING CALCULATIONS.
3. CONCRETE GRADE RINGS SHALL BE UTILIZED TO BRING COVER TO FINISHED GRADE.
4. GREASE TRAP SHALL BE PRECAST ONLY.
5. CLEANOUTS SHALL BE INSTALLED WITHIN 2' OF GREASE TRAP ON BOTH THE INLET AND OUTLET.

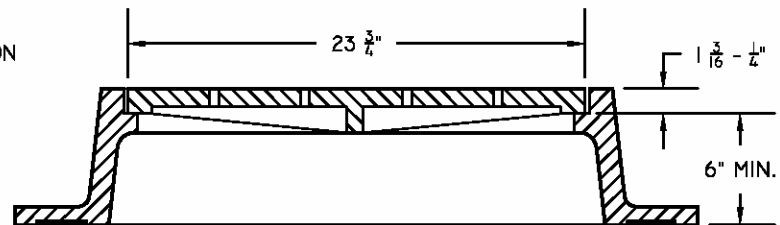


BROAD CREEK PUBLIC SERVICE DISTRICT		
GREASE TRAP DETAIL		
DATE 06/01/15	DRAWN BY LEK	DRAWING # S-03
SCALE N.T.S.	APPROVED BY JLO	

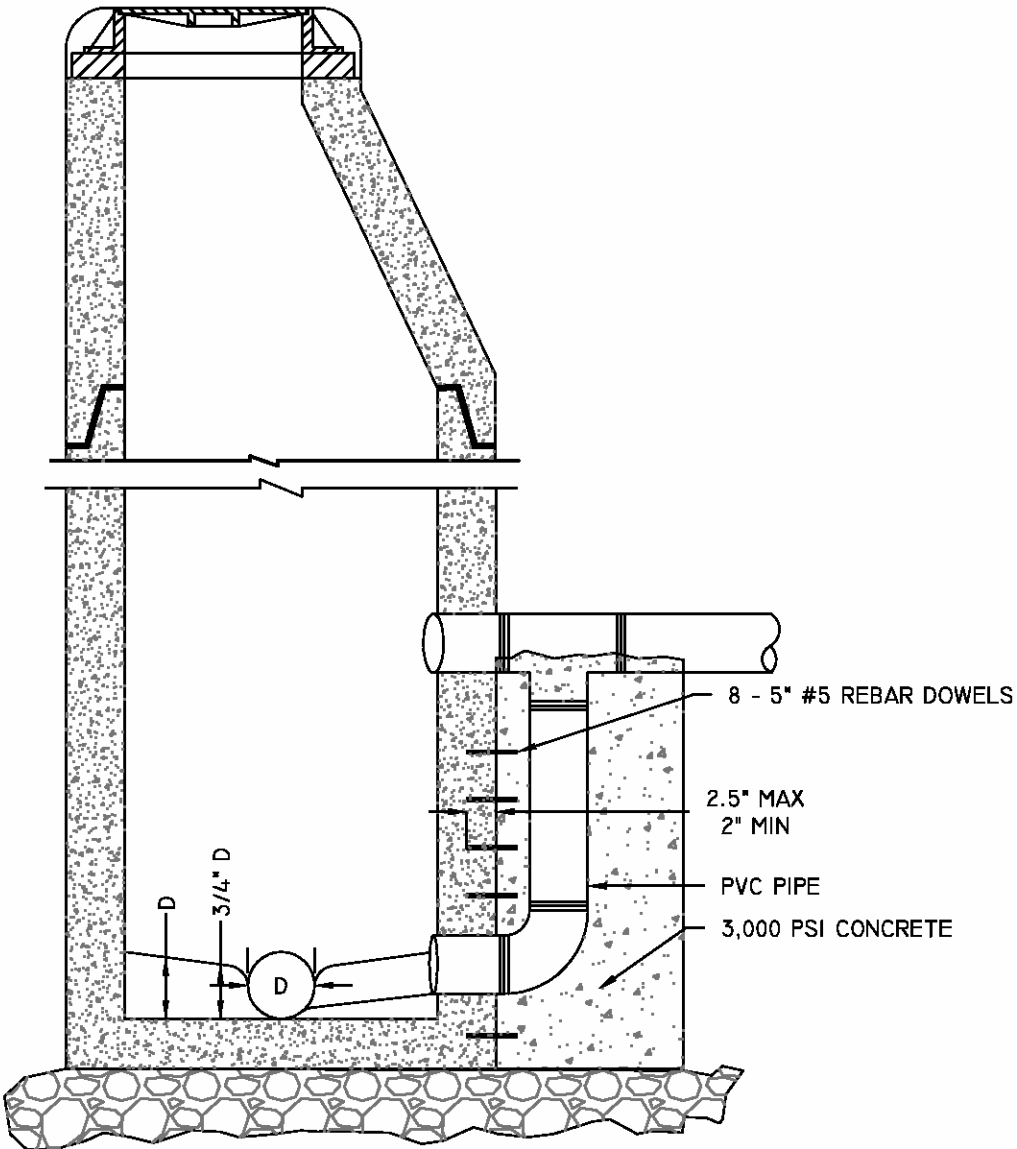


NOTES:

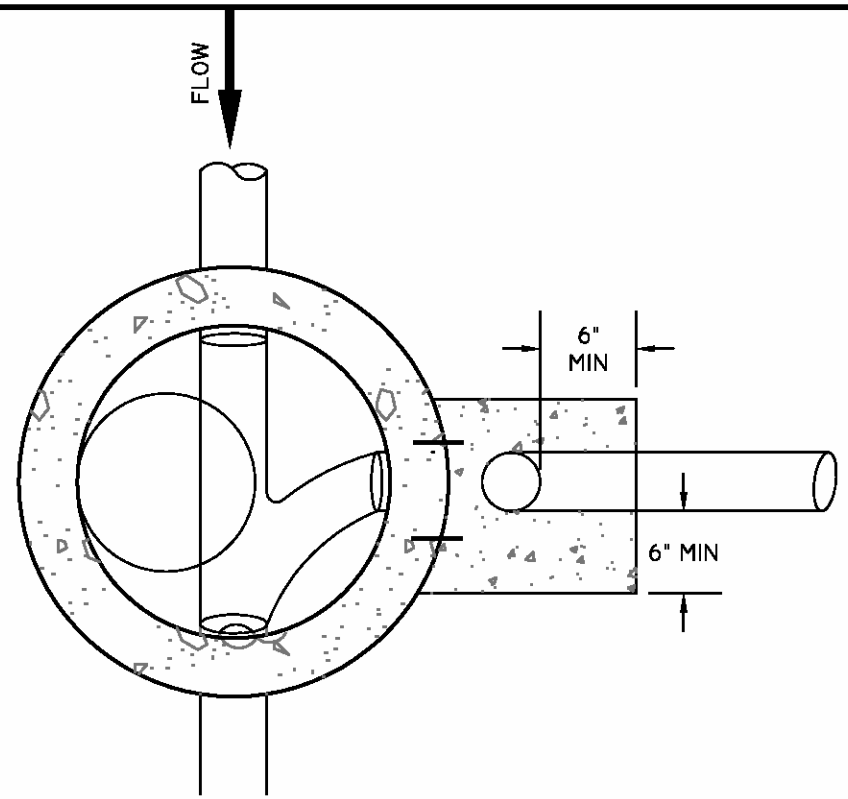
1. CASTINGS SHALL BE OF UNIFORM QUALITY, FREE FROM BLOWHOLES, POROSITY, HARD SPOTS, SHRINKAGE, DISTORTION OR OTHER DEFECTS. THEY SHALL BE SMOOTH AND WELL CLEANED BY SHOT BLASTING OR BY SOME OTHER APPROVED METHOD UNLESS AN ALTERNATIVE SPECIFICATION IS MADE.
2. MATERIALS USED IN THE MANUFACTURE OF CASTINGS SHOULD CONFORM TO ASTM, AASHTO, ASA, MIL, AMS OR FEDERAL SPECIFICATIONS FOR GRAY IRON OR DUCTILE IRON AS FOLLOWS: GRAY IRON-ASTM CLASS 35, DUCTILE IRON-GRADE 60-40-18.
3. ALL CASTINGS SHALL BE MANUFACTURED TRUE TO PATTERN



BROAD CREEK PUBLIC SERVICE DISTRICT		
MANHOLE, COVER AND FRAME		
DATE 06/01/15	DRAWN BY LEK	DRAWING # S-04
SCALE N.T.S.	APPROVED BY JLO	



SECTION VIEW

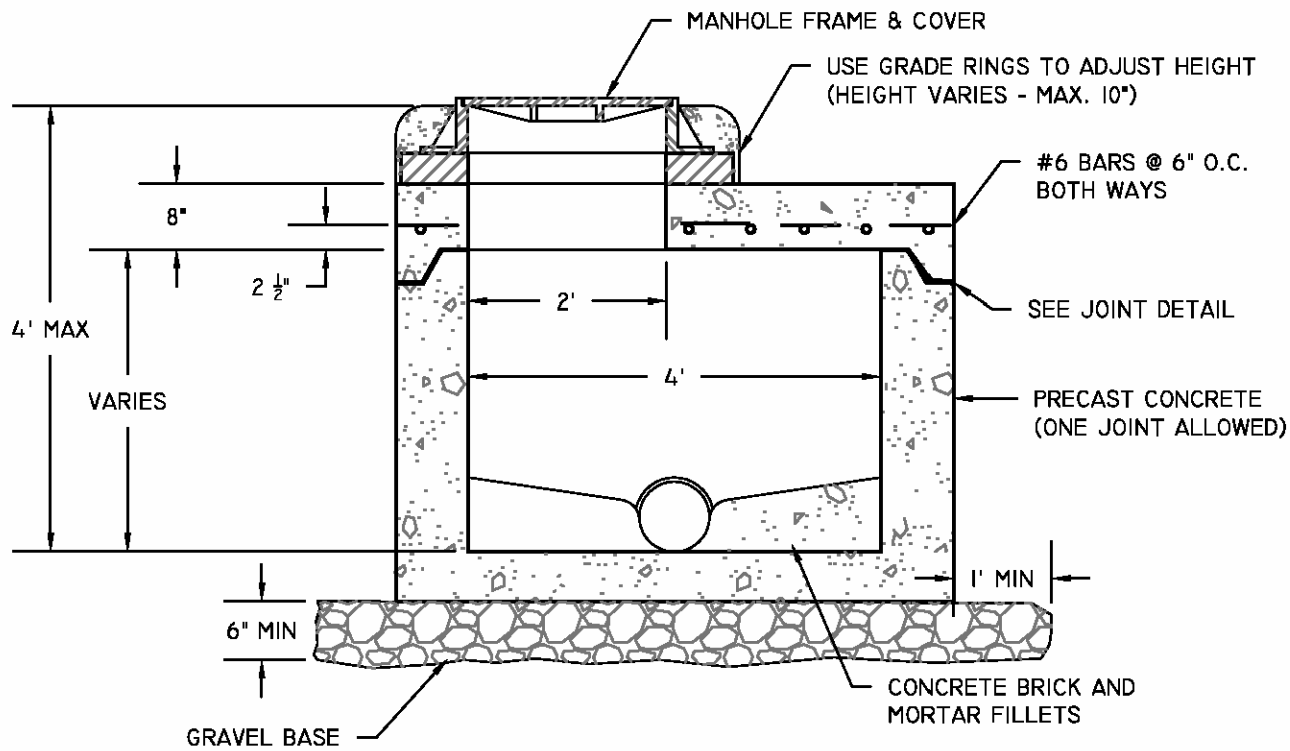


PLAN VIEW

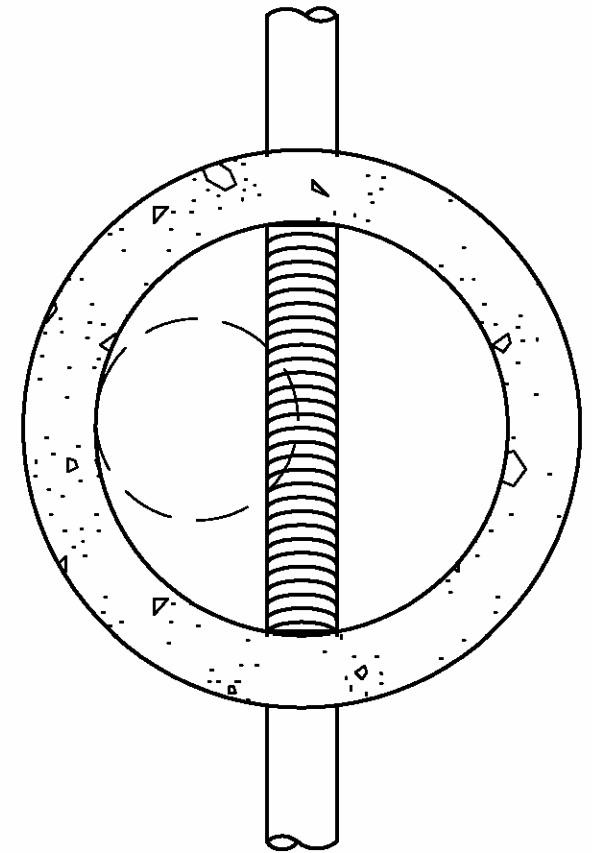
BROAD CREEK PUBLIC SERVICE DISTRICT		
MANHOLE, DROP		
DATE 06/01/15	DRAWN BY: LEK	DRAWING # S-05
SCALE: N.T.S.	APPROVED BY: JLO	

NOTES:

- REFER TO STANDARD SPECIFICATIONS FOR INTERIOR COATING REQUIREMENTS.

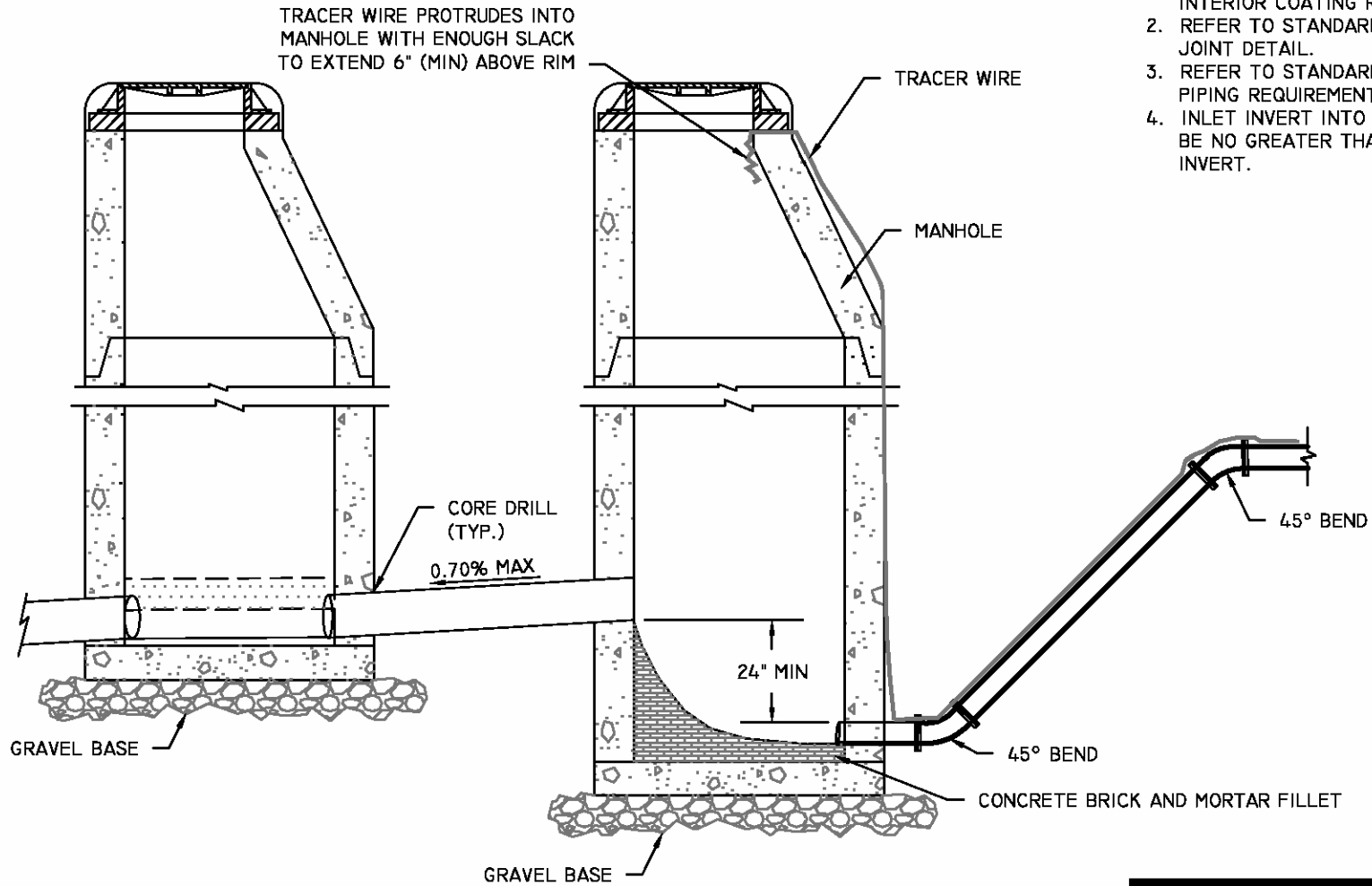


SECTION VIEW



PLAN VIEW

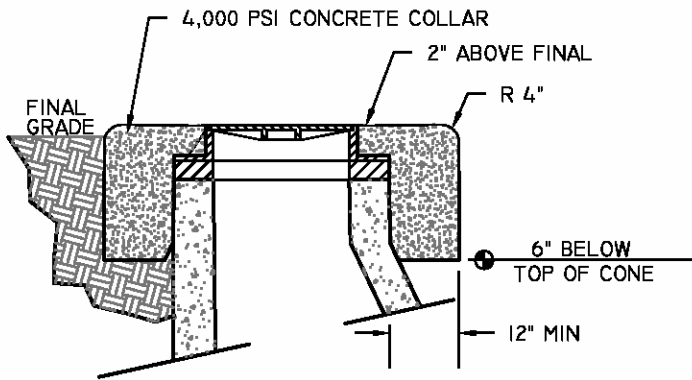
BROAD CREEK PUBLIC SERVICE DISTRICT		
MANHOLE, FLAT TOP		
DATE 06/01/15	DRAWN BY: LEK	DRAWING # S-06
SCALE: N.T.S.	APPROVED BY: JLO	



NOTES:

1. REFER TO STANDARD SPECIFICATIONS FOR INTERIOR COATING REQUIREMENTS.
2. REFER TO STANDARD MANHOLE DETAIL FOR JOINT DETAIL.
3. REFER TO STANDARD SPECIFICATIONS FOR PIPING REQUIREMENTS.
4. INLET INVERT INTO EXISTING MANHOLE SHOULD BE NO GREATER THAN 0.2' ABOVE OUT GOING INVERT.

BROAD CREEK PUBLIC SERVICE DISTRICT			
MANHOLE, FORCE MAIN CONTROL			
DATE	06/01/15	DRAWN BY	LEK
SCALE	N.T.S.	APPROVED BY	JLO
			DRAWING # S-07



RURAL MANHOLE PROTECTIVE COLLAR

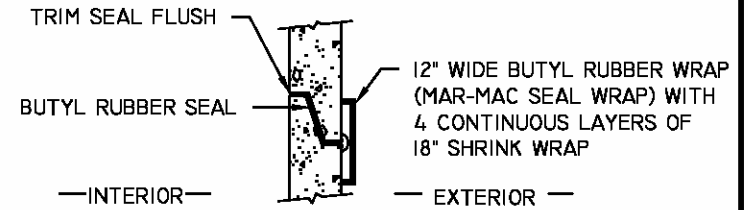
NOTES:

1. REFER TO STANDARD SPECIFICATIONS FOR INTERIOR COATING REQUIREMENTS.
2. CONCRETE GROUTING IS NOT ALLOWED INSIDE MANHOLES.
3. RIM ELEVATION ON RURAL MANHOLES SHALL BE 6" HIGHER THAN NEAREST MANHOLE OUTSIDE THE RURAL AREA.

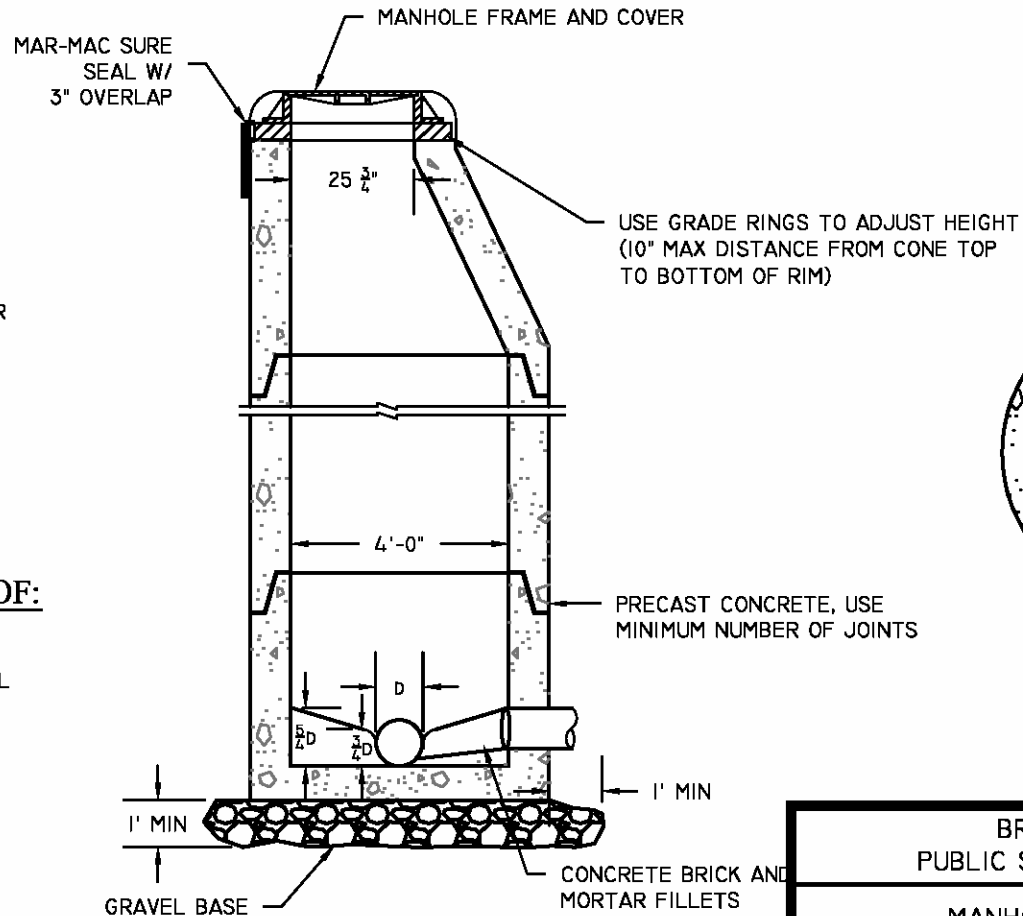
TO SPAN CHIMNEY HEIGHTS OF:

0" - 3 1/2"
OVER 3 1/2" - 7 1/2"
OVER 7 1/2" - 12 1/2"

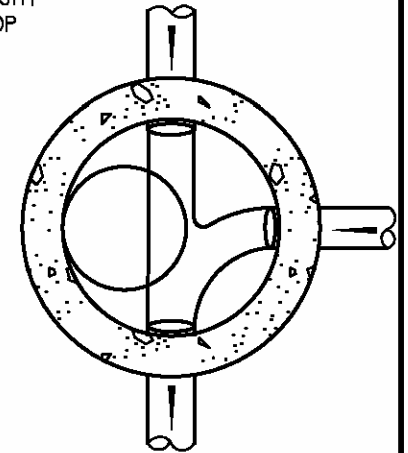
NARROW (7") SEAL
STANDARD (11") SEAL
WIDE (16") SEAL



JOINT DETAIL

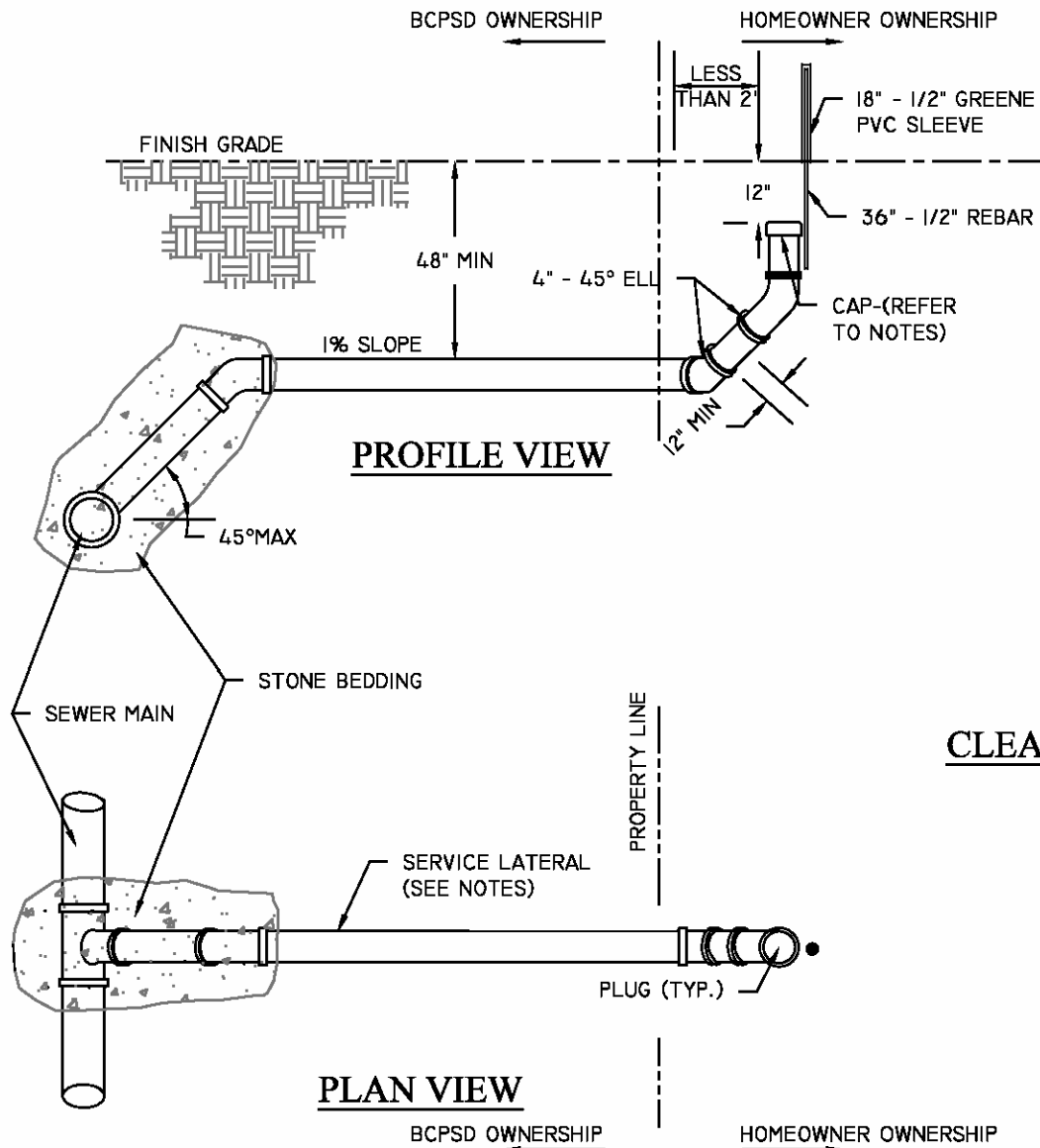


SECTION VIEW



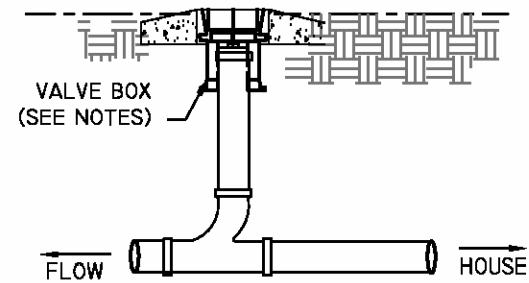
PLAN VIEW

BROAD CREEK PUBLIC SERVICE DISTRICT		
MANHOLE, STANDARD		
DATE 06/01/15	DRAWN BY LEK	DRAWING # S-08
SCALE N.T.S.	APPROVED BY JLO	

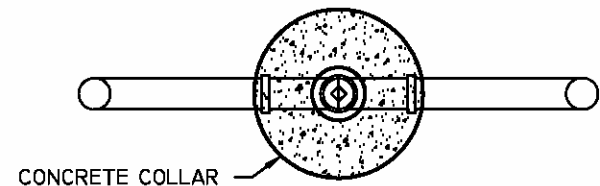


NOTES:

1. SERVICE LATERAL SHALL BE INSTALLED 12" BELOW FINISHED GRADE AND CAPPED IN A MANNER SUITABLE FOR PRESSURE TESTING.
2. CLEAN OUTS INSIDE GRASSED AREA SHALL CONSIST OF PVC PLUG IN SEWER LIDDED VALVE BOX SURROUNDED BY A CONCRETE COLLAR. COLLAR SHALL BE FLUSH WITH FINISHED GRADE. VALVE BOX LID SHALL NOT PROTRUDE ABOVE COLLAR TOP.
3. ALL CLEAN OUTS ARE TO BE 4", INCLUDING CLEAN OUTS ON 6" SEWER LATERALS.



CLEAN OUT INSTALLATION - PROFILE VIEW

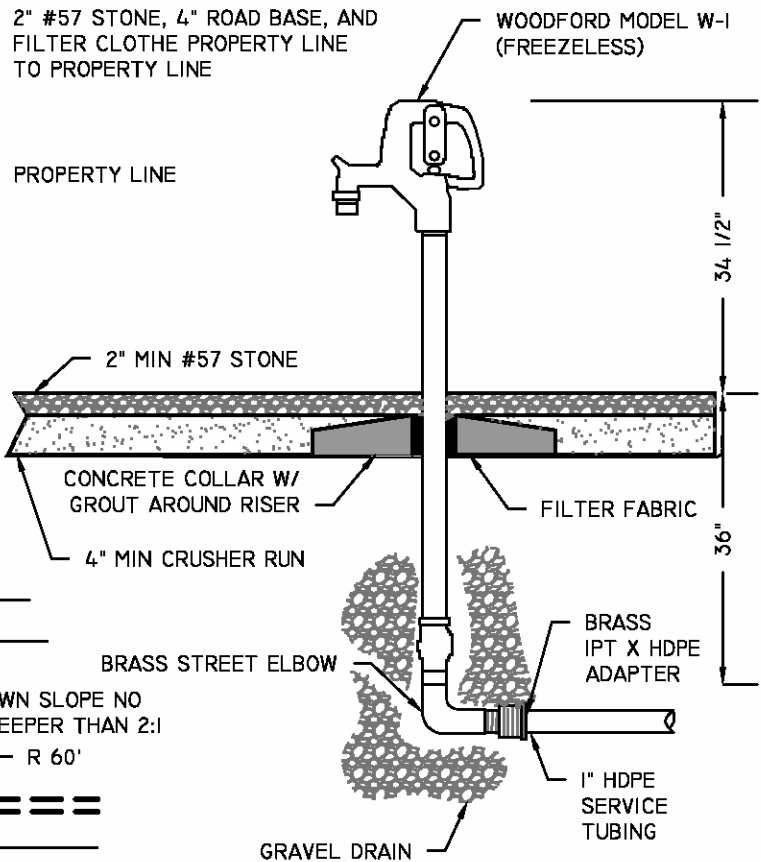
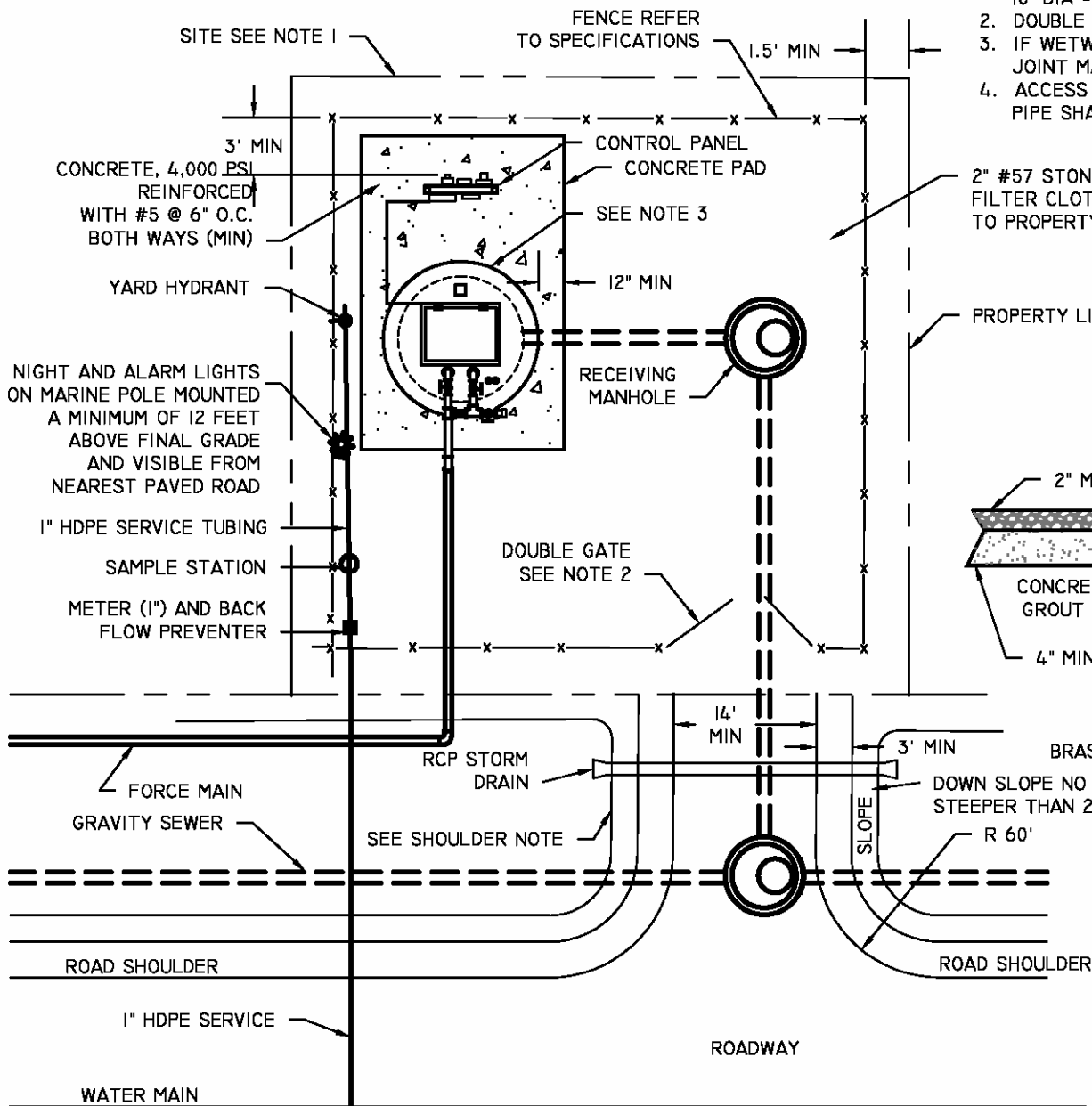


CLEAN OUT - PLAN VIEW

BROAD CREEK PUBLIC SERVICE DISTRICT		
SEWER SERVICE SINGLE		
DATE 06/01/15	DRAWN BY LEK	DRAWING # S-9
SCALE N.T.S.	APPROVED BY JLO	

NOTES:

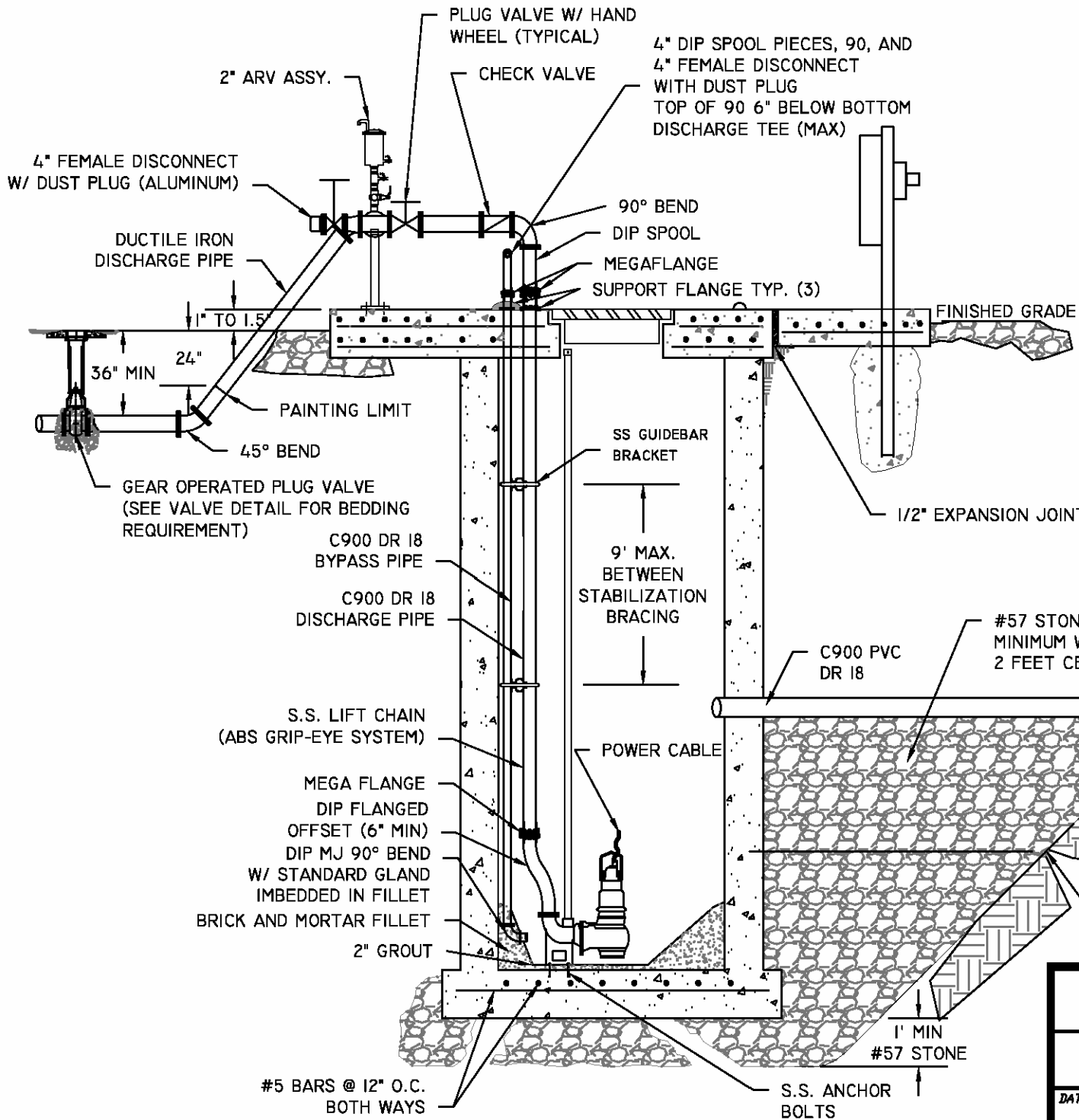
1. SITE DIMENSIONS ARE BASED ON WETWELL DIAMETER:
6'-8" DIA = 40'X40'
10' DIA = 50'X50'
2. DOUBLE GATES SHALL HAVE 16' MIN OPEN WIDTH.
3. IF WETWELL TOP IS PRECAST, INSTALL 1/2" EXPANSION JOINT MATERIAL BETWEEN WETWELL AND SLAB.
4. ACCESS ROAD SHOULDERS WITH IN 16' OF STORM DRAIN PIPE SHALL NOT SLOPE TOWARD DITCH.



YARD HYDRANT

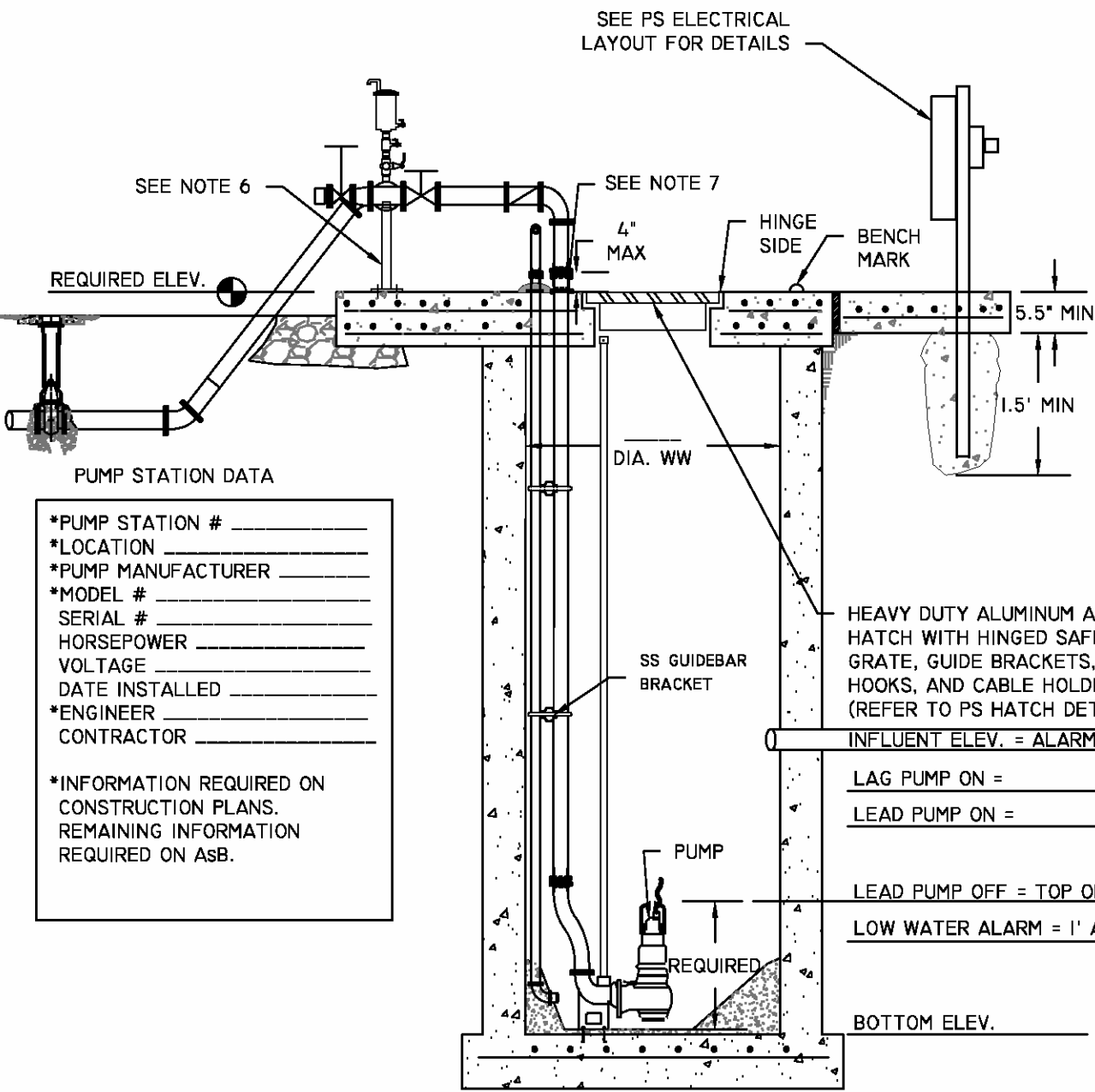
RECOMMENDED LAYOUT
DEVELOP SITE SPECIFIC LAYOUT

BROAD CREEK PUBLIC SERVICE DISTRICT		
PUMP STATION SITE PLAN		
DATE 06/01/15	DRAWN BY LEK	DRAWING # S-10
SCALE N.T.S.	APPROVED BY JLO	



SUBGRADE IS TO BE SPELLED OUT BY DESIGN ENGINEER TO PREVENT SURFACE SETTLING

BROAD CREEK PUBLIC SERVICE DISTRICT		
PUMP STATION SECTION I		
DATE 06/01/15	DRAWN BY: LEK	DRAWING # S-11
SCALE: N.T.S.	APPROVED BY: JLO	



- NOTES:
1. ALL WETWELL PIPING SHALL BE ONE SOLID PIECE OF FUSIBLE C900 PVC, WITH NO JOINTS.
 2. ALL BOLTS, GUIDE RAILS, BRACKETS, HANGERS, AND LIFTING APPURTENANCES INSIDE WET WELL SHALL BE 316 STAINLESS STEEL.
 3. DISCHARGE AND VENT PIPING PENETRATIONS SHALL BE SEALED WITH SS LINK SEALS.
 4. WETWELL INTERIOR AND DISCHARGE PIPING SHALL BE COATED WITH HYDROGEN SULFIDE RESISTANT COATING. (SEE SPECIFICATIONS FOR REQUIREMENTS)
 5. EXTERIOR PIPING SHALL BE PAINTED. (SEE SPECIFICATIONS FOR REQUIREMENTS)
 6. PROVIDE ADJUSTABLE SUPPORT TO ABOVE GROUND PIPING AT THIS POINT. FURNISH SUBMITTAL FOR APPROVAL ON PROPOSED SUPPORT PRIOR TO PROCEEDING.
 7. PROTECT EXPOSED PVC FROM UV DETERIORATION SUBMIT ON PROPOSED METHOD.
 8. ALL THROUGH TOP PIPING SUPPORTED ON WW TOP BY UNIFLANGES.
 9. IF DISCHARGE LEG IS LONGER THAN A SINGLE LENGTH OF PIPE, THEN FUSIBLE PVC MUST BE USED. NO COUPLINGS ARE PERMITTED ON DISCHARGE LEG.
 10. ATTACH FLOAT CABLES TO SAFETY GRATE. ATTACHMENTS AWAY FROM THE HINGE SHALL BE IN THE FOLLOWING ORDER:
 OFF PUMP
 ON PUMP
 ALARM (HIGH)

PUMP STATION DATA

*PUMP STATION # _____
 *LOCATION _____
 *PUMP MANUFACTURER _____
 *MODEL # _____
 SERIAL # _____
 HORSEPOWER _____
 VOLTAGE _____
 DATE INSTALLED _____
 *ENGINEER _____
 CONTRACTOR _____

*INFORMATION REQUIRED ON CONSTRUCTION PLANS. REMAINING INFORMATION REQUIRED ON ASB.

INFLUENT ELEV. = ALARM ELEVATION = _____

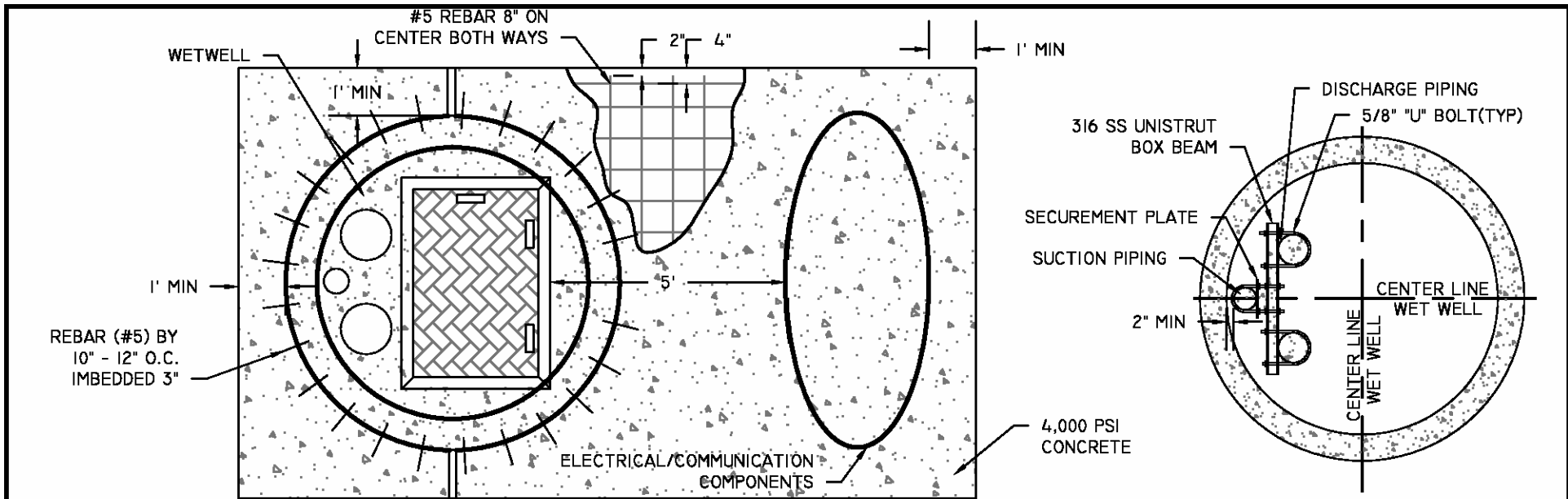
LAG PUMP ON = _____

LEAD PUMP ON = _____

LEAD PUMP OFF = TOP OF PUMP LIFTING EYE = _____

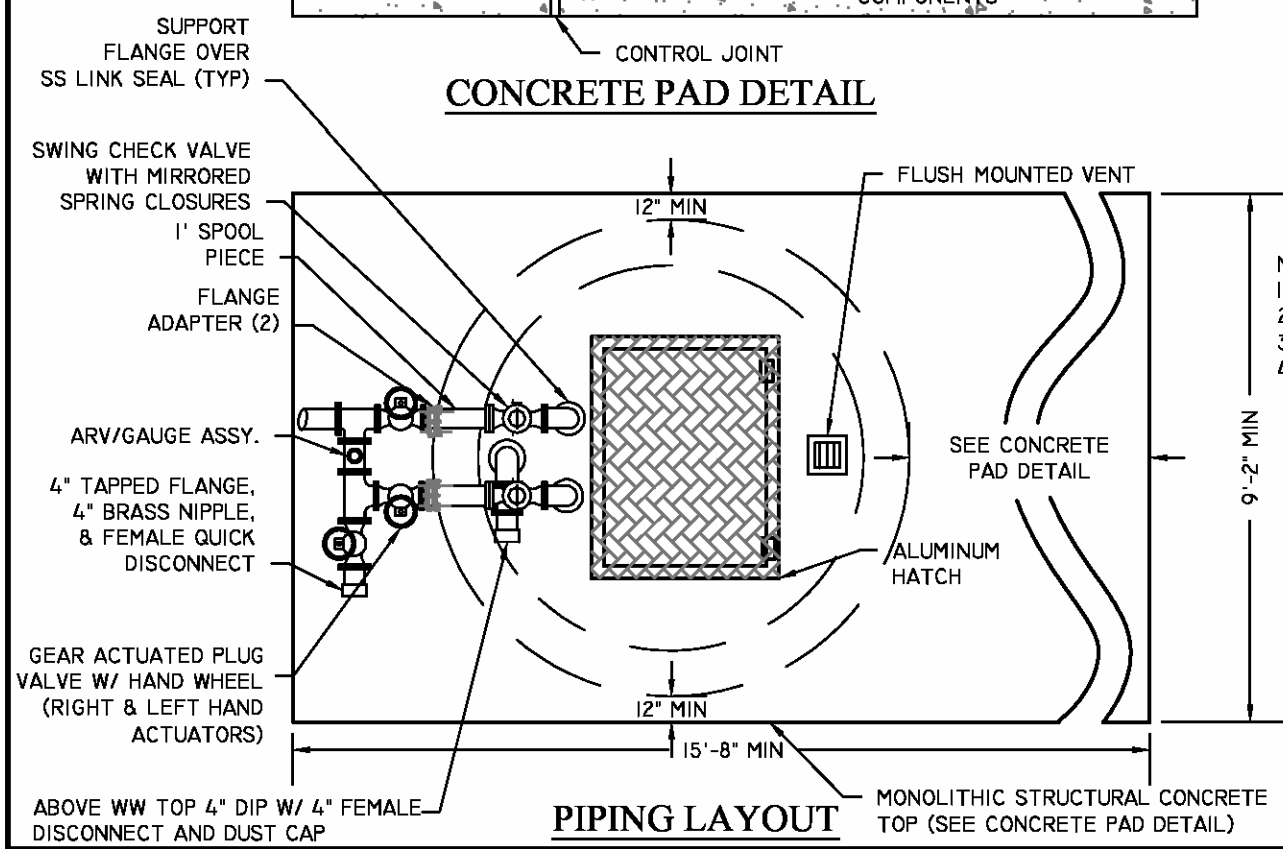
LOW WATER ALARM = 1' ABOVE PUMP CAVATATION = _____

BROAD CREEK PUBLIC SERVICE DISTRICT		
PUMP STATION SECTION II		
DATE 06/01/15	DRAWN BY: LEK	DRAWING # S-12
SCALE: N.T.S.	APPROVED BY: JLO	



CONCRETE PAD DETAIL

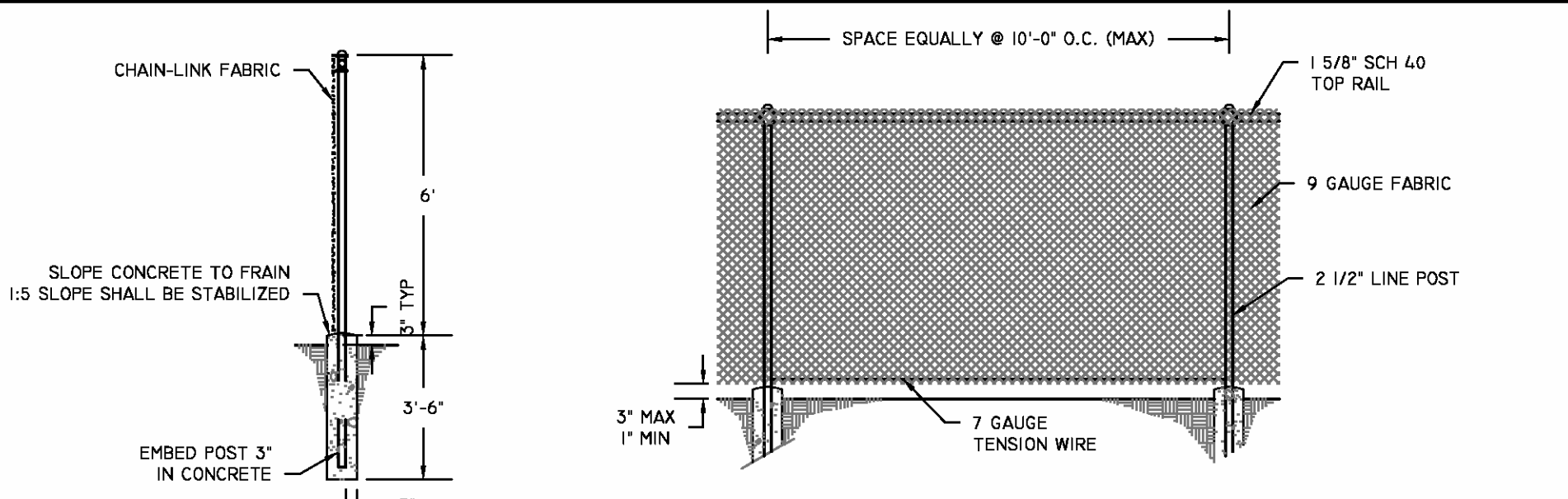
PS LATERAL SUPPORT BRACKET



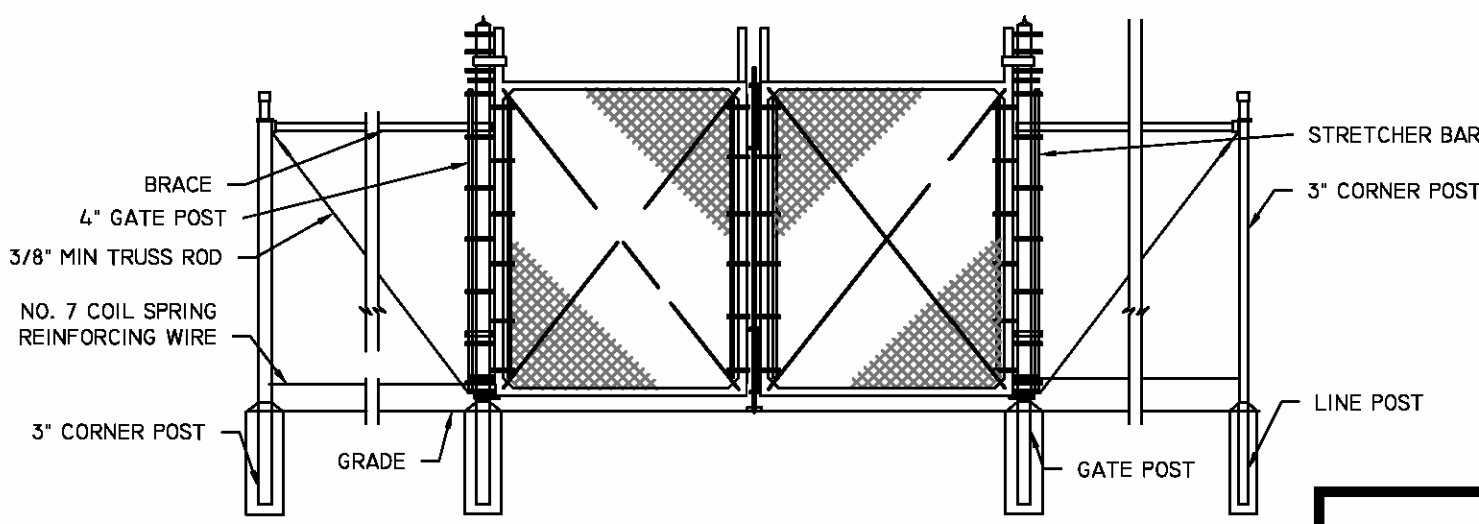
PIPING LAYOUT

- NOTES:
1. CONCRETE IS TO BE A MINIMUM OF 5 1/2" THICK
 2. REINFORCING IS TO BE 2" ABOVE BOTTOM
 3. ALL EXPOSED EDGES SHALL BE SHAMPERED (1"X1" MIN)
 4. VERTICAL PIPING BRACING IS NOT EXCEED 9' ON CENTER

BROAD CREEK PUBLIC SERVICE DISTRICT		
PUMP STATION WET WELL DETAIL		
DATE 06/01/15	DRAWN BY LEK	DRAWING # S-13
SCALE N.T.S.	APPROVED BY JLO	



FENCE DETAILS

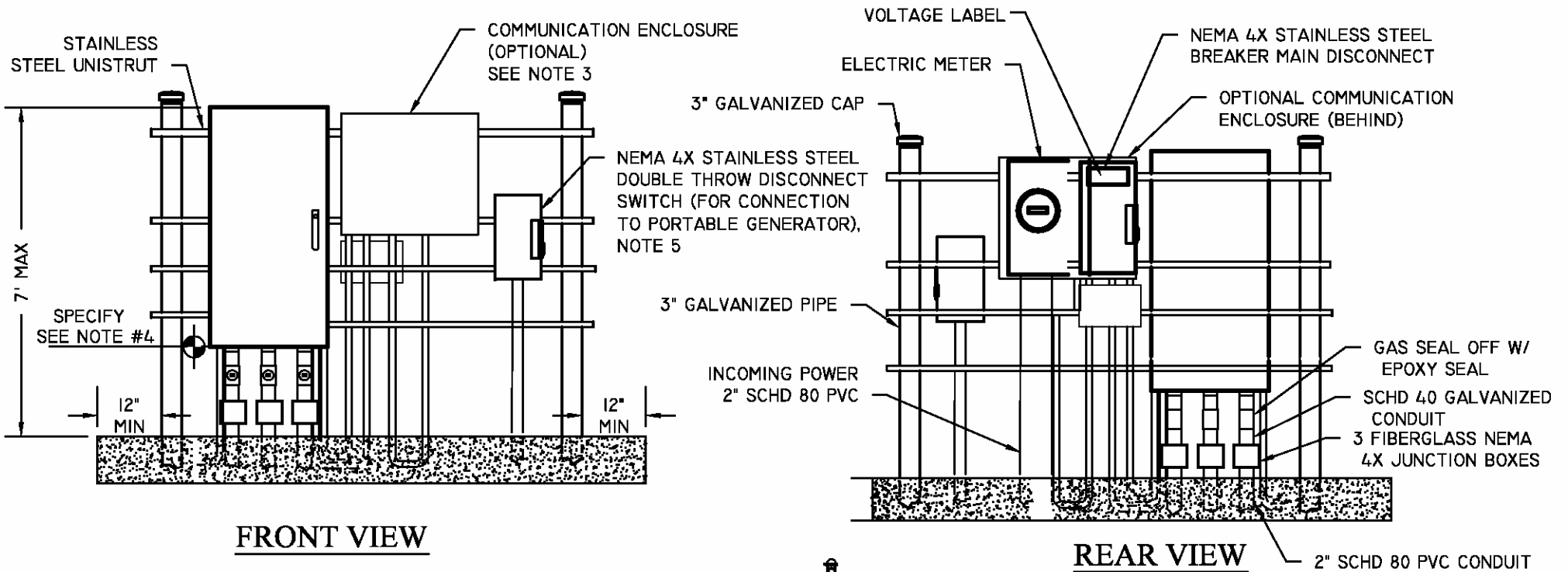


GATE DETAIL

- NOTES:
1. REFER TO STANDARD SPECIFICATIONS FOR SITE SIZE REQUIREMENTS.
 2. PROVIDE DUCK BILL GATE STOPS. STOPS ARE TO BE ANCHORED IN ONE CUBIC FOOT OF CONCRETE, MIN., AND ARE TO BE AGAINST THE FENCE.

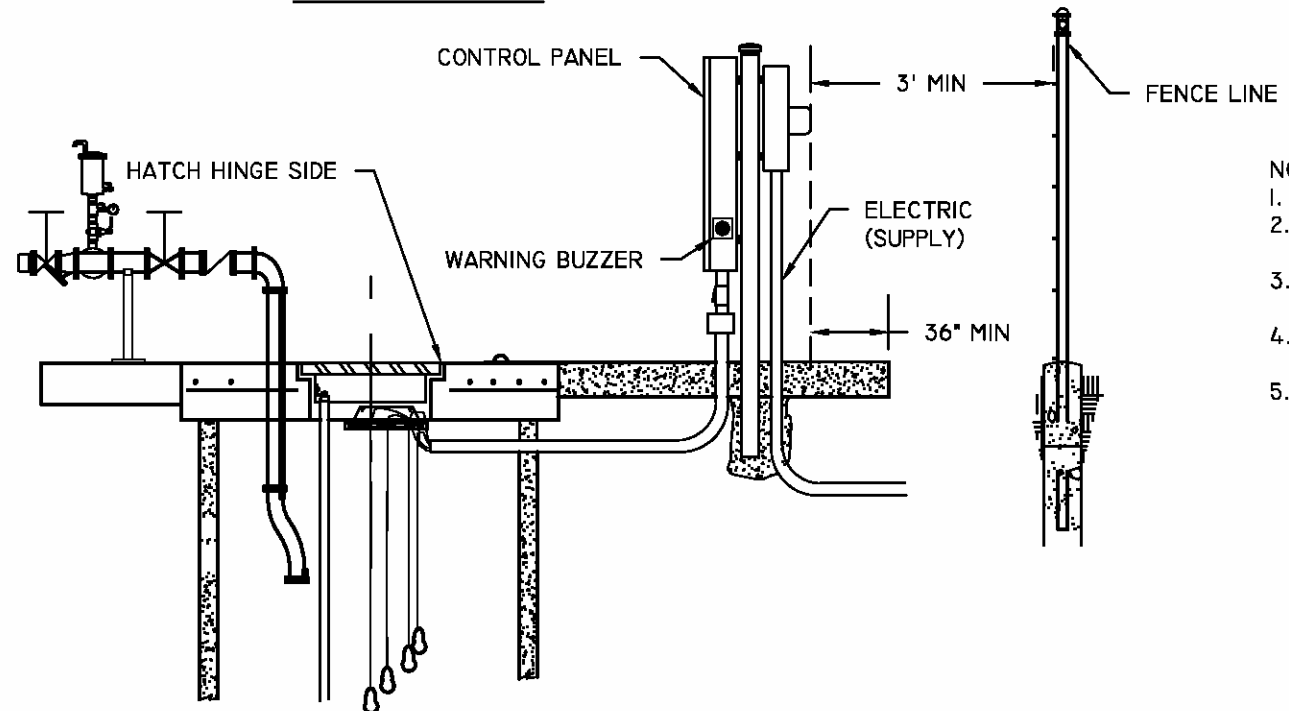
1'-4" CONCRETE FOR POSTS 4" OR LESS
2'-0" CONCRETE FOR POSTS OVER 4"

BROAD CREEK PUBLIC SERVICE DISTRICT		
PUMP STATION FENCING DETAIL		
DATE 06/01/15	DRAWN BY LEK	DRAWING # S-14
SCALE N.T.S.	APPROVED BY JLO	



FRONT VIEW

REAR VIEW

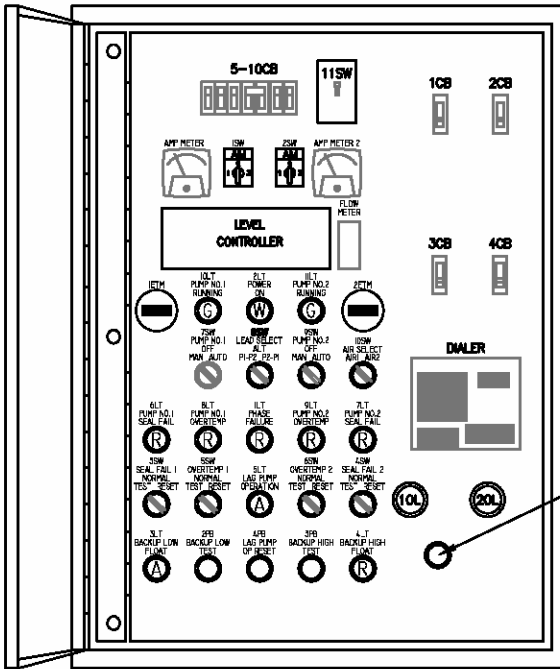


SECTION VIEW

- NOTES:
1. ALL PENETRATIONS MUST ENTER THROUGH BOTTOM
 2. L-BEE'S MAY BE USED SPARINGLY UPON WRITTEN REQUEST
 3. SEE SPECIFICATIONS FOR COMMUNICATIONS REQUIREMENTS
 4. MUST BE ABOVE 25 YEAR FLOOD ELEVATION. PROVIDE CERTIFICATION OF THIS ELEVATION FOR THE PS
 5. PROVIDE EXTERIOR RATED KNOCKOUT PLUGS IN BOTTOM OF DISCONNECT WHEN PORTABLE GENERATOR IS NOT IN USE.

BROAD CREEK PUBLIC SERVICE DISTRICT		
PUMP STATION ELECTRICAL LAYOUT		
DATE 06/01/15	DRAWN BY: BN	DRAWING # S-15
SCALE: N.T.S.	APPROVED BY: JLO	

INNER DOOR LAYOUT



GENERAL FLASHING ALARM LIGHT (REMOTELY MOUNTED)



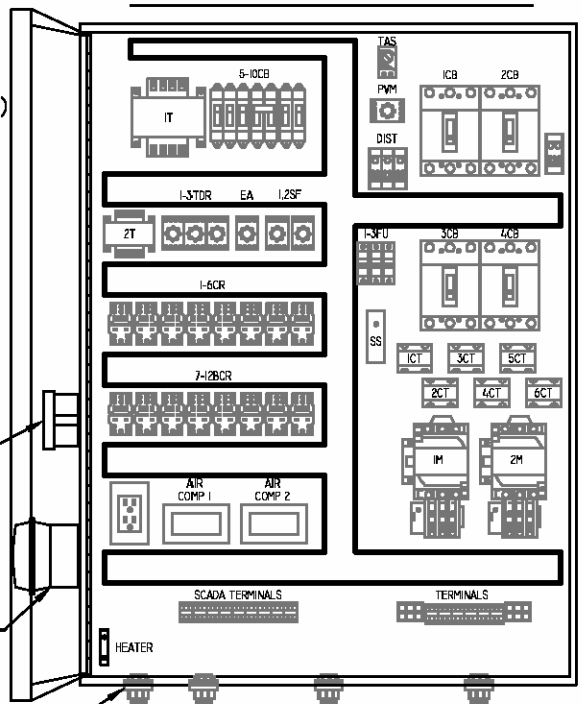
ALARM HORN

ALARM SILENCER IPB

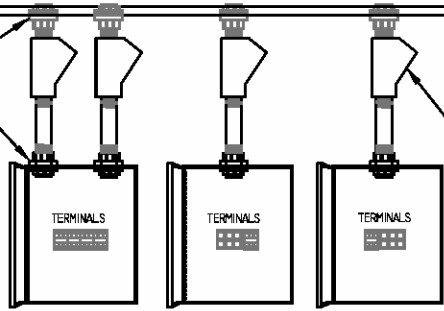
GFCI WITH WEATHERPROOF COVER

ENCLOSURE: 4XSS/3PT 48"H X 36"W X 12"D

SUB-PANEL LAYOUT



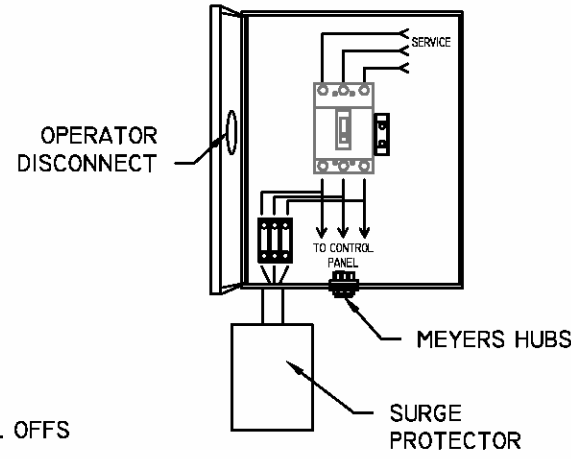
MEYERS HUBS



JUNCTION BOXES: 4XFG 10"H X 8"W X 4"D

JUNCTION BOXES

ENCLOSURE: 4XSS 20"H X 16"W X 8"D
MAIN DISCONNECT

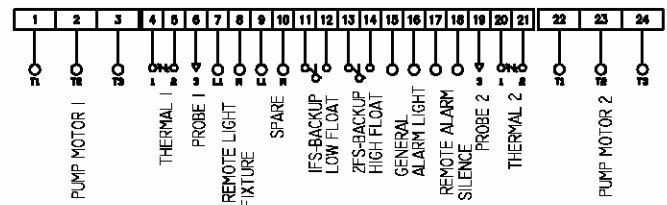


ENCLOSURE: 4XSS - MINIMUM 20"H X 16"W
ENCLOSURE IS TO HAVE "LOCK ON" PROVISION

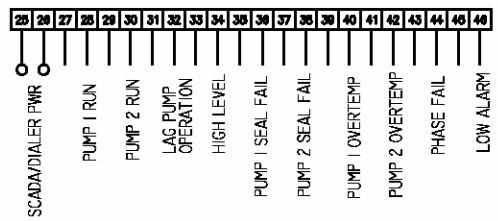
NOTES:

1. PANEL STRUCTURAL MEMBERS SHALL NOT BLOCK COMPONENTS VISIBLE THROUGH INNER DOOR.
2. JUNCTION BOXES MAYBE OFFSET TO LEFT OR RIGHT OF CONTROL PANEL. THEY MUST BE OFFSET ON LARGER STATIONS.

TERMINAL BLOCK LAYOUT



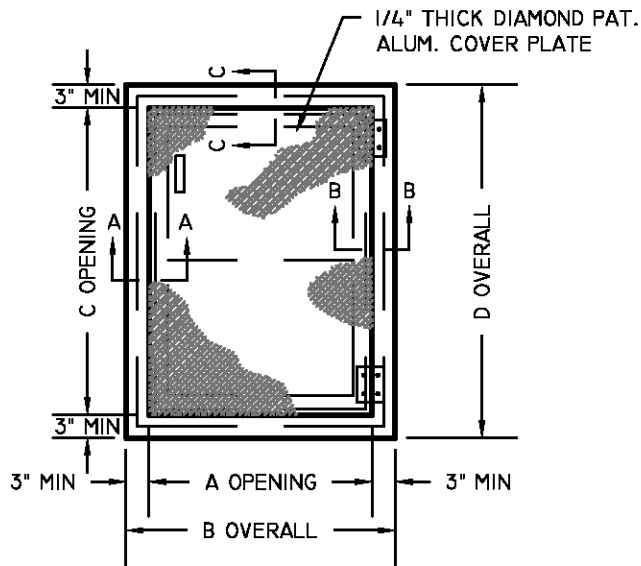
SCADA TERMINAL BLOCK LAYOUT



BROAD CREEK
PUBLIC SERVICE DISTRICT

PUMP STATION CONTROL PANEL &
MAIN DISCONNECT

DATE 06/01/15	DRAWN BY: LEK	DRAWING # S-16
SCALE: N.T.S.	APPROVED BY: JLO	

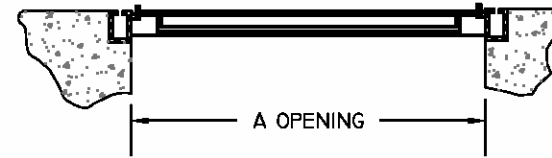


WETWELL ACCESS HATCH
NOT TO SCALE

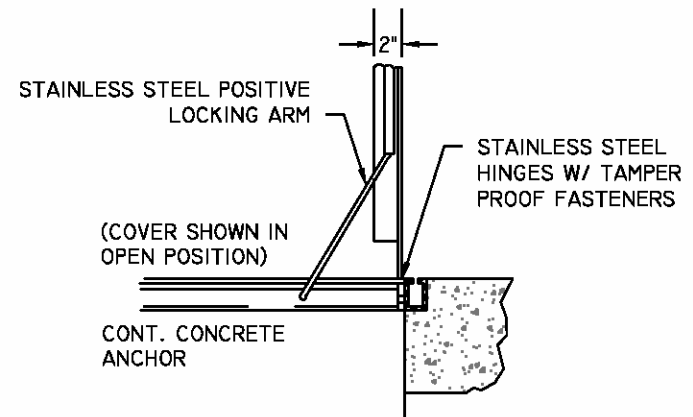
WETWELL DIA	DIMENSION		LIFT WT.
	A	C	
6'	32"	48"	24 LBS
8' - 10'	36"	48"	26 LBS

NOTES:

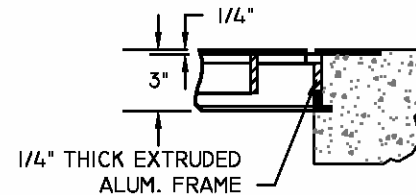
1. ALL HATCHES SHALL BE EQUIPPED WITH A SAFETY GRATE. DIMENSIONS "A" & "C" SHALL INCLUDE ANY RESTRICTION IMPOSED BY SAFETY GRATE.
2. FOR LOCATION OF ACCESSORIES SEE PUMP OUTLINE DIMENSIONS.
3. HATCH SHALL BE EQUIPPED WITH A PAD-LOCKABLE RECESSED LOCKING MECHANISM.
4. HATCH DIMENSIONS SHOWN ARE MINIMUM SIZES ALLOWED. THE ENGINEER SHALL BE RESPONSIBLE FOR VERIFYING MINIMUM HATCH DIMENSIONS FOR PUMP SELECTED.
5. FLOATS AND BUBBLER SHALL BE HUNG FROM THE SAFETY GRATE.



SECTION A-A

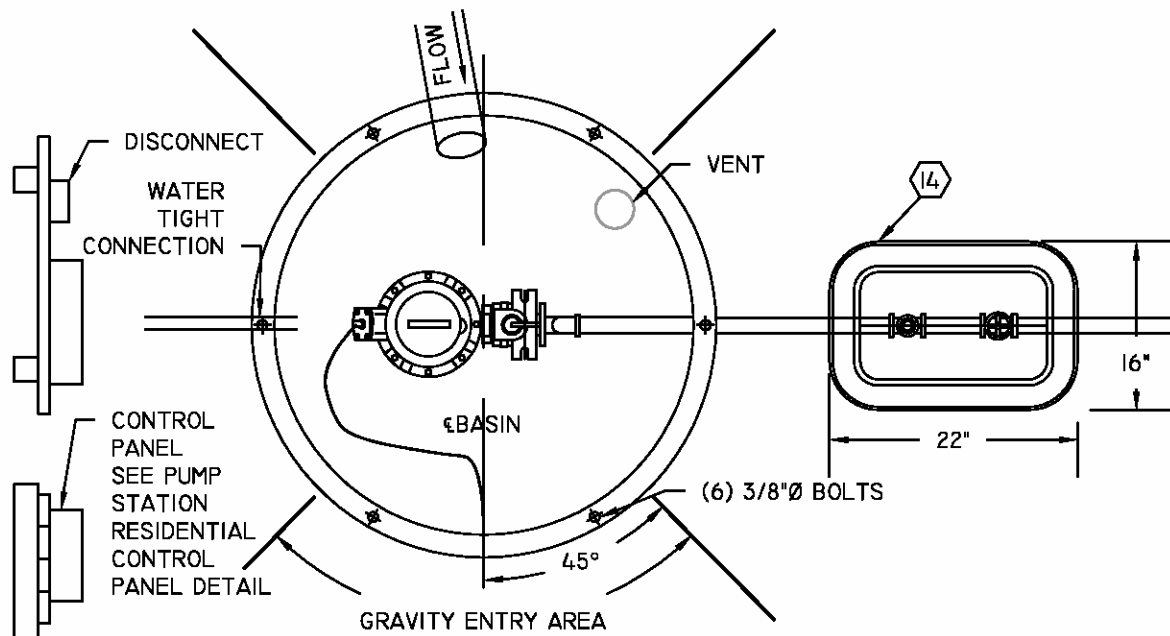


SECTION B-B



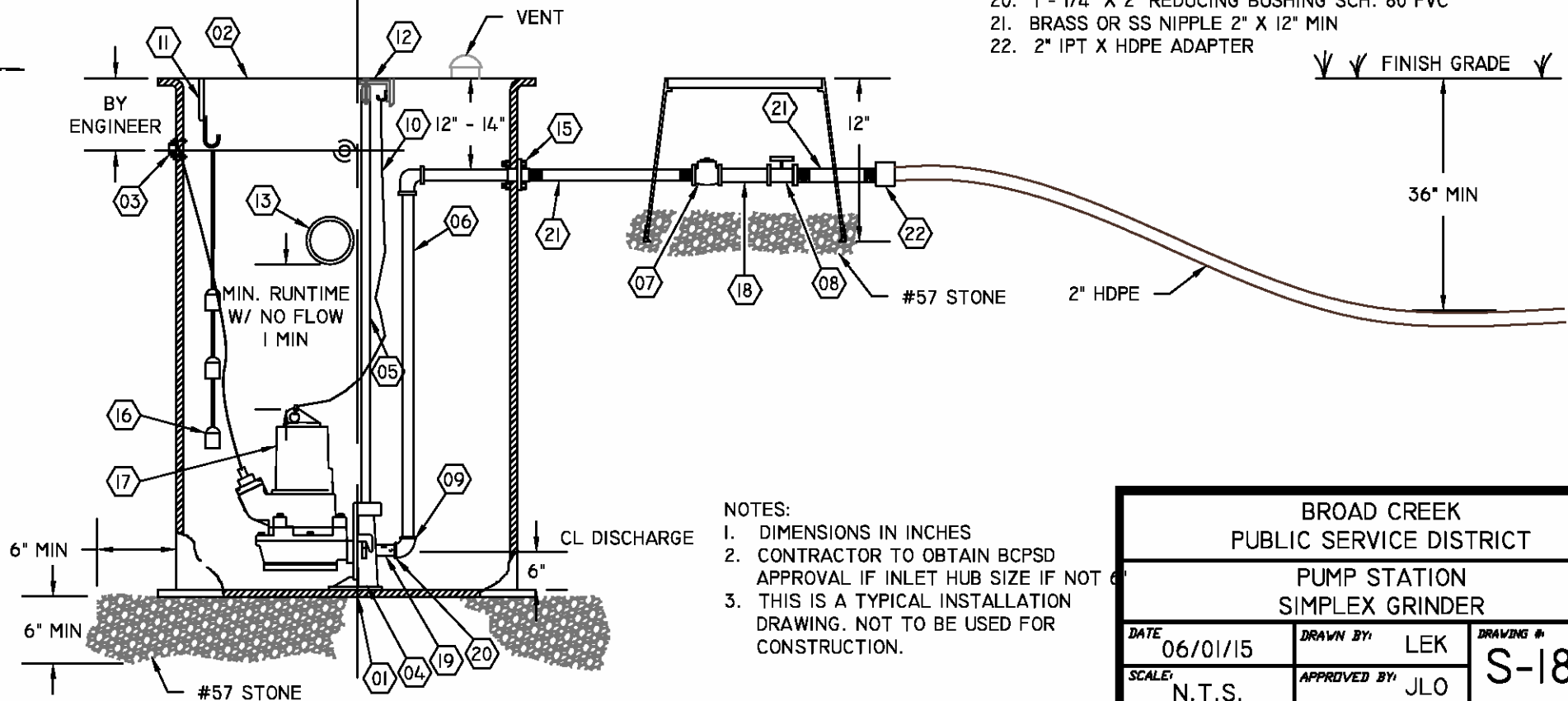
SECTION C-C

BROAD CREEK PUBLIC SERVICE DISTRICT		
PUMP STATION HATCH DETAIL		
DATE 06/01/15	DRAWN BY LEK	DRAWING # S-17
SCALE N.T.S.	APPROVED BY JLO	



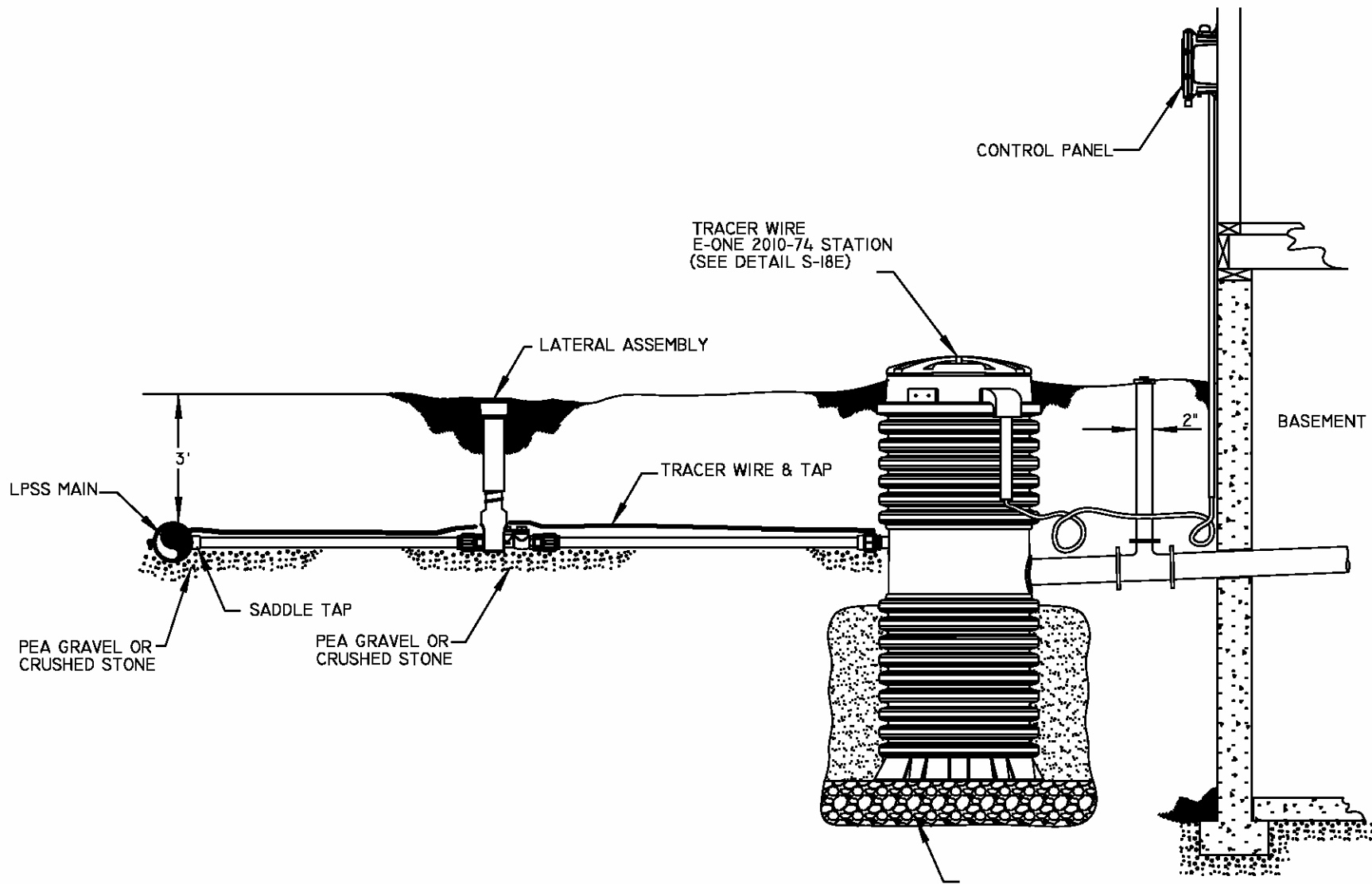
ITEM DESCRIPTION:

01. FIBERGLASS BASIN, 30"X60" WITH FIBERGLASS ANTI-FLOAT
02. 5/8" 304 SS SIMPLEX MOUNTING STUDS
03. FIBERGLASS ACCESS COVER NUTS GLASSED INTO BASIN LID
04. 2" NPT GLASS FILLED PLASTIC ELECTRICAL COUPLING FLANGE ASSEMBLY WITH GASKET KIT
05. ABS SINGLE GUIDE RAIL BASE ASSEMBLY
06. 2" SCH. 40 TYPE 304 SS GUIDE RAILS
07. 2" SCH. 80 PVC DISCHARGE PIPE (TYPICAL)
08. 2" NPT BRASS FLAPPER CHECK VALVE (THREADED)
09. 2" SCH. 80 PVC TRUE UNION BALL VALVE
10. 2" SCH. 80 PVC ELBOWS (2)
11. 3/16" 316 STAINLESS STEEL LIFTING CHAIN WITH 5/16" SS SHACKLE
12. 316 SS SIX HOOK CABLE HOLDER FLOAT BRACKET
13. 316 SS UPPER GUIDE WITH ALUMINUM SUPPORT BAR
14. 6" FLEXIBLE INLET HUB
15. BOX 22" X 16" X 12" DEEP
16. DISCHARGE CONNECTION, 2" SCH. 80 PVC (SOLVENT WELD)
17. ANCHOR MINI-FLOAT SWITCHES
18. ABS PIRANHA S-18/2W 230/1, 3.5 HP PUMP
19. 2" 316 SS OR BRASS NIPPLE
20. 1 - 1/4" THREADED X PE SCH. 80 PVC NIPPLE
21. 1 - 1/4" X 2" REDUCING BUSHING SCH. 80 PVC
22. BRASS OR SS NIPPLE 2" X 12" MIN
23. 2" IPT X HDPE ADAPTER



- NOTES:
1. DIMENSIONS IN INCHES
 2. CONTRACTOR TO OBTAIN BCPSD APPROVAL IF INLET HUB SIZE IF NOT 6"
 3. THIS IS A TYPICAL INSTALLATION DRAWING. NOT TO BE USED FOR CONSTRUCTION.

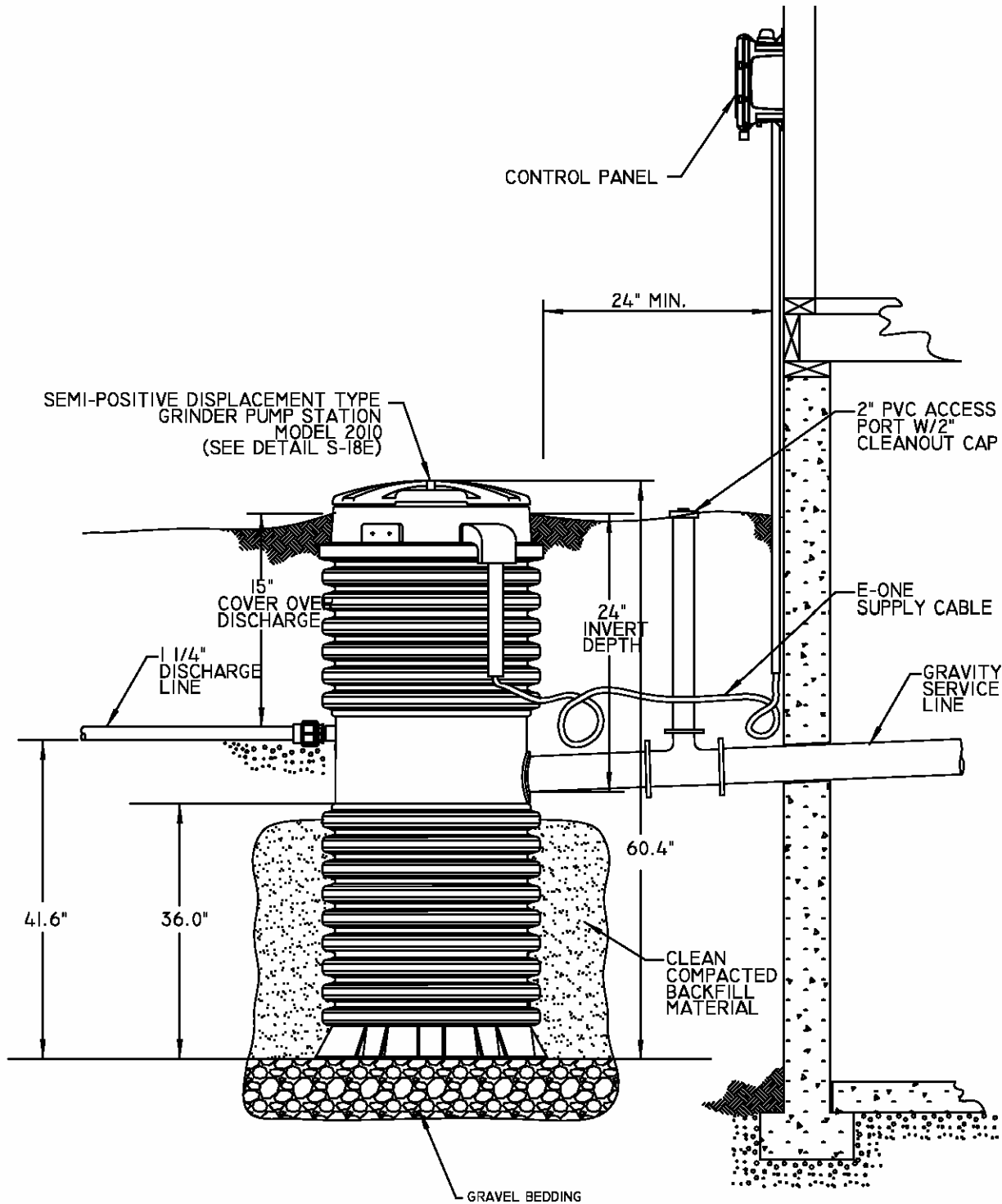
BROAD CREEK PUBLIC SERVICE DISTRICT		
PUMP STATION SIMPLEX GRINDER		
DATE 06/01/15	DRAWN BY: LEK	DRAWING # S-18-A
SCALE: N.T.S.	APPROVED BY: JLO	



BROAD CREEK
PUBLIC SERVICE DISTRICT

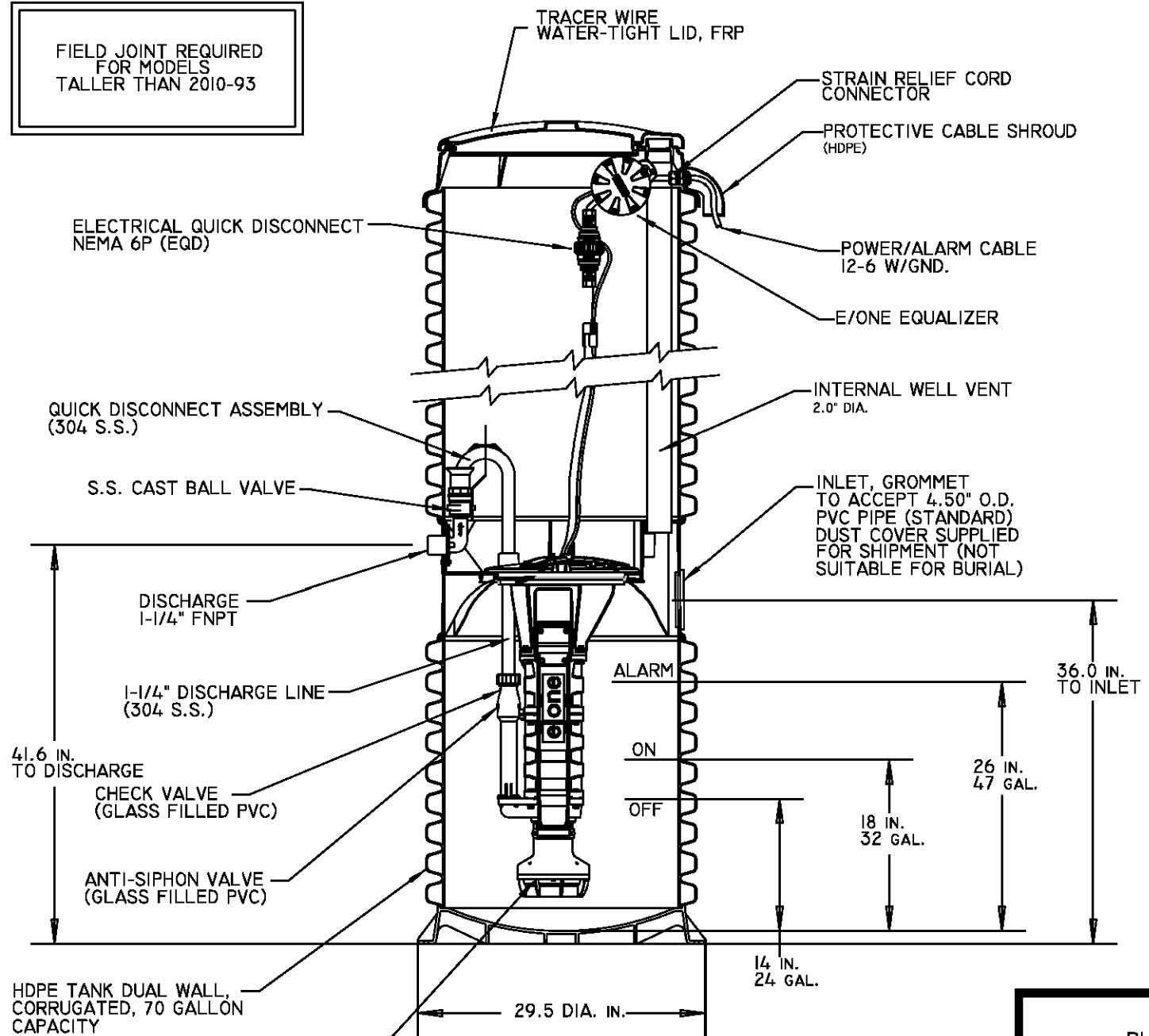
ENVIROMENTAL ONE SEWR SYSTEMS
TYPICAL LATERAL INSTALLATION

DATE 11/17/15	DRAWN BY: TP	DRAWING # S-18B
SCALE: N.T.S.	APPROVED BY: JLO	



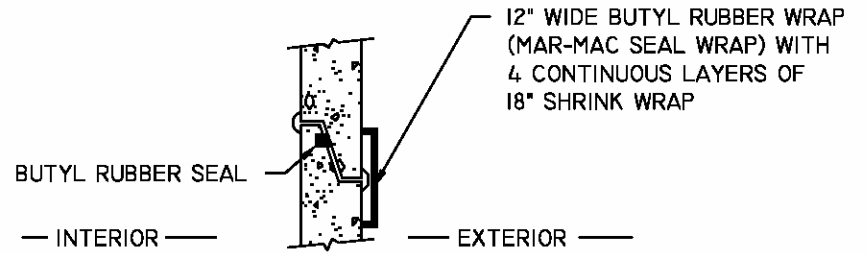
BROAD CREEK PUBLIC SERVICE DISTRICT		
ENVIROMENTAL ONE SEWR SYSTEMS TYPICAL OUTDOOR INSTALLATION		
DATE 11/17/15	DRAWN BY: TP	DRAWING # S-18C
SCALE: N.T.S.	APPROVED BY: JLO	

FIELD JOINT REQUIRED
FOR MODELS
TALLER THAN 2010-93

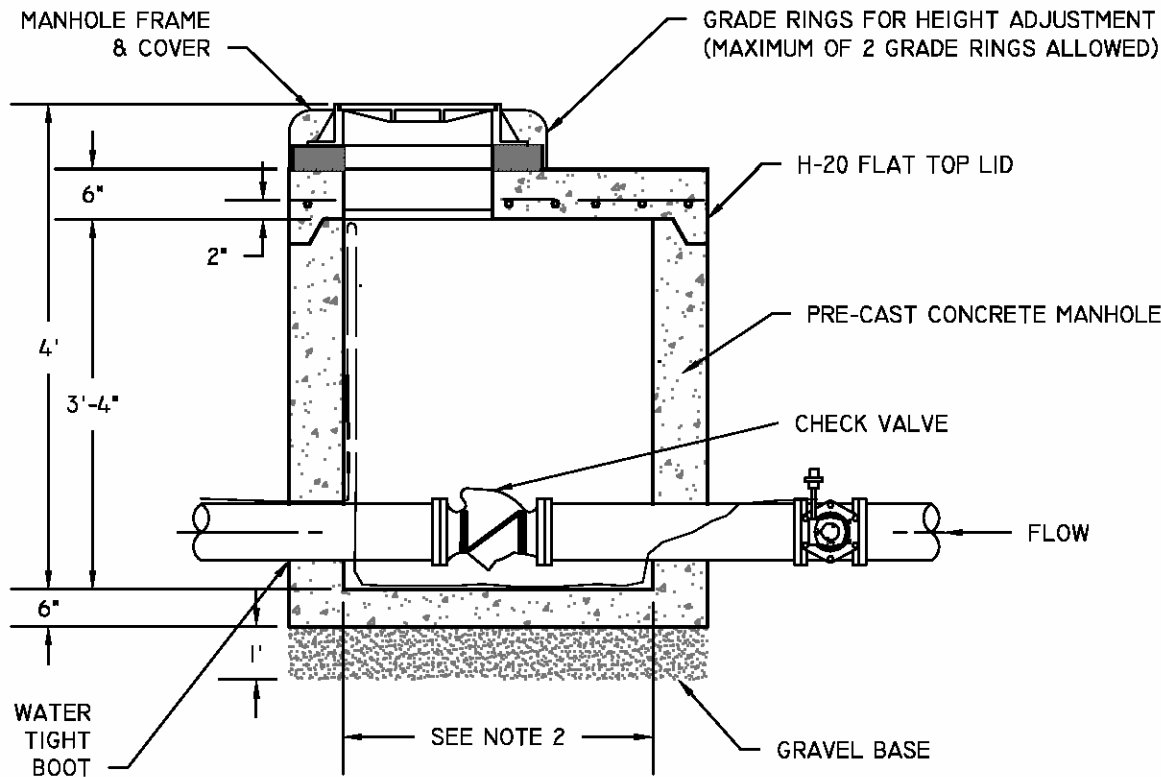


SEMI-POSITIVE DISPLACEMENT TYPE PUMP
EACH DIRECTLY DRIVEN BY A 1 HP MOTOR

BROAD CREEK PUBLIC SERVICE DISTRICT		
ENVIROMENTAL ONE SEWR SYSTEMS SEMI-POSITIVE DISPLACEMENT TYPE GRINDER P.S.		
DATE 11/17/15	DRAWN BY: TP	DRAWING # S-18D
SCALE: N.T.S.	APPROVED BY: JLO	



TITLE DETAIL



NOTES:

1. SET TOPS OF MANHOLES FLUSH WITH FINAL GRADE UNLESS NOTED OTHERWISE.
2. REFER TO SPECIFICATIONS FOR REQUIRED MANHOLE DIAMETER.
3. CHECK VALVE SHALL BE INSTALLED AS NEAR TIE-IN TO F.M. AS POSSIBLE.

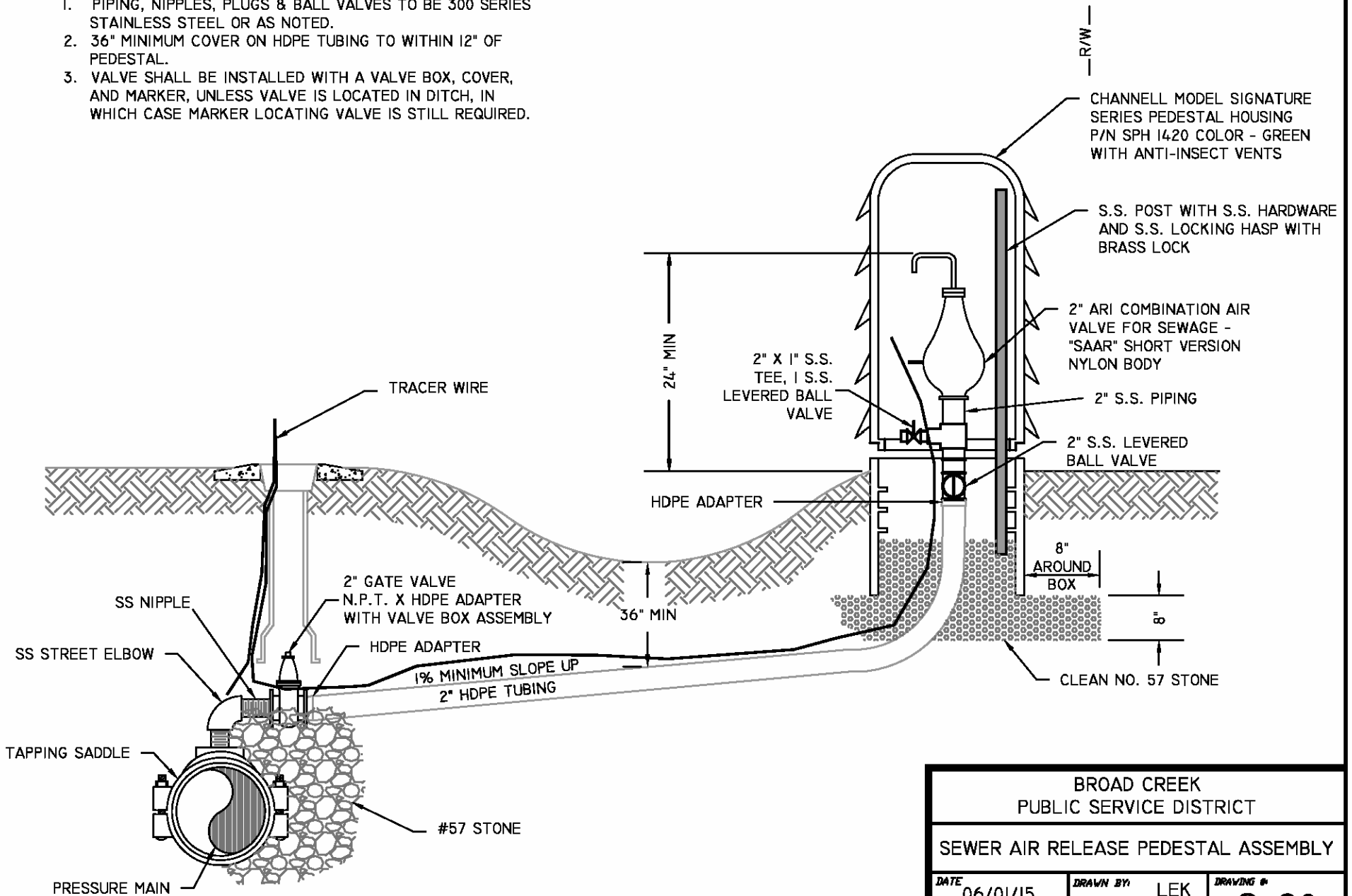
SEWER CHECK VALVE IN MANHOLE

NOT TO SCALE

BROAD CREEK PUBLIC SERVICE DISTRICT		
SEWER CHECK VALVE		
DATE 06/01/15	DRAWN BY: LEK	DRAWING # S-19
SCALE: N.T.S.	APPROVED BY: JLO	

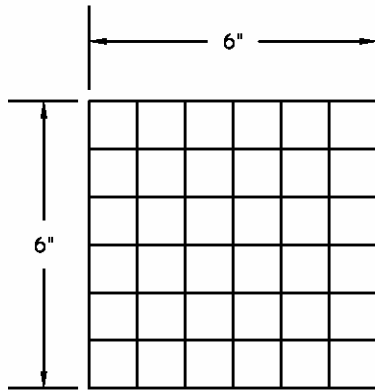
NOTES:

1. PIPING, NIPPLES, PLUGS & BALL VALVES TO BE 300 SERIES STAINLESS STEEL OR AS NOTED.
2. 36" MINIMUM COVER ON HDPE TUBING TO WITHIN 12" OF PEDESTAL.
3. VALVE SHALL BE INSTALLED WITH A VALVE BOX, COVER, AND MARKER, UNLESS VALVE IS LOCATED IN DITCH, IN WHICH CASE MARKER LOCATING VALVE IS STILL REQUIRED.



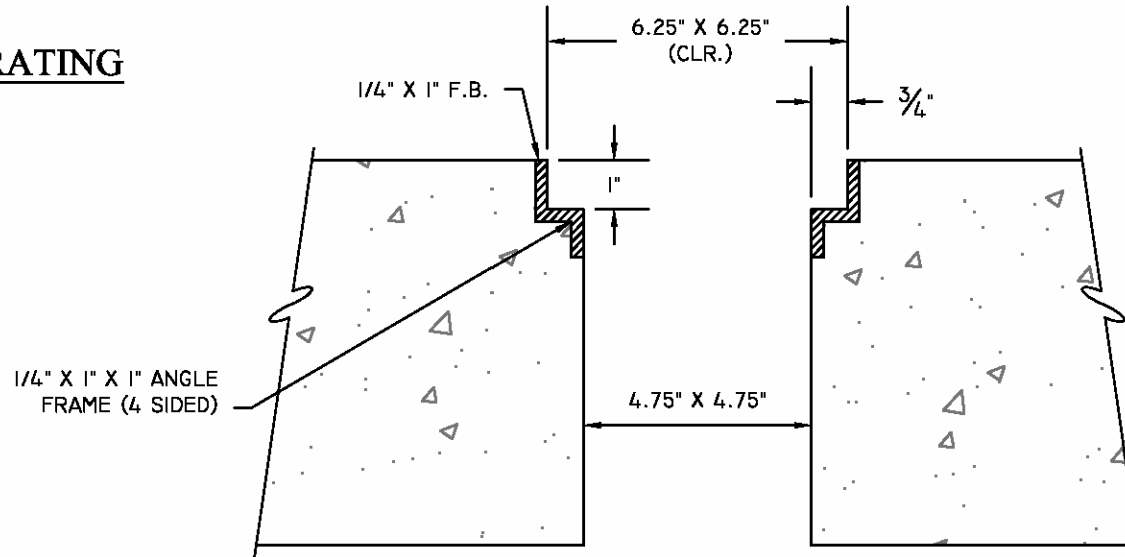
BROAD CREEK PUBLIC SERVICE DISTRICT		
SEWER AIR RELEASE PEDESTAL ASSEMBLY		
DATE 06/01/15	DRAWN BY LEK	DRAWING # S-20
SCALE N.T.S.	APPROVED BY JLO	

6" X 6" X 1" GRATING DETAIL FOR STRUCTURE # _____



SHIP WITH 6"X6"X1" GRATING

1" X 1" X 1" ALUM. GRATING



SECTION THRU FRAME

BROAD CREEK PUBLIC SERVICE DISTRICT		
PUMP STATION 6X6 GRATE DETAIL		
DATE 06/01/15	DRAWN BY LEK	DRAWING # S-21
SCALE N.T.S.	APPROVED BY JLO	